

PrimaLuna® ProLogue Two

Herman van den Dungen: **PrimaLuna** ▶ *in Italian language is "First Moon". My grandfather was the first "Herman". My grandmother, an aristocratic lady in a small Dutch village, had a special name for her husband: "Maantje", which means Little Moon (which is now also the name of our small dog), van den Dungen. The people in the village adopted that name, and having a strong accent, they soon called him "Maontje" van den Dungen. My father's first name was Cor, but in the village it was of course "Cor from Maontje van den Dungen". I was of course "Herman from Cor from Maontje van den Dungen" etc. That's why I thought of First Moon as a brandname and that's why the logo is how it is ◀*

Loris Arrigucci: **PrimaLuna** ▶ *believe it or not ... I discovered a small town located 50Km north of Milano called Primaluna!!! Please get yourself a map from Italy. You'll find Primaluna town near the upper-right corner. It is located 50Km north of Milano near the Lake of Como. This should eliminate every doubt regarding "italian" origin of Primaluna name. I've read the "history" section of the Primaluna village web site and found the following (literally translated):*

One probable interpretation of the name of the village comes from latin "Primum Lumen", which means "First Light" of Christianity, since the very first evidence of Christianity in this region dates 495 Annus Domini. "First Light" translates into "Prima Luce" in Italian and this seems very interesting to me: PrimaLuce (FirstLight) is the first light that we, hi-fi lovers with small budgets, can see in this world of darkness populated by way too expensive esoteric gears ◀



Please contact us for registering your PrimaLuna ProLogue Two amplifier. We will keep you updated of upgrades or any other information related to your amplifier. If you wish to comment on your PrimaLuna ProLogue Two amplifier, please do. If you want to send us a review of your experience with the amplifier, you are more than welcome to. If you have any technical questions, please don't hesitate to contact us. We thank you upfront for your time and attention.

Local distribution:

Worldwide distribution:
Durob Audio BV
P.O. Box 109
5250 AC Vlijmen
The Netherlands

Email: durob@hifi-notes.com
Website: www.primaluna.nl

PrimaLuna® ProLogue Two

PrimaLuna®

ProLogue Two

Integrated Amplifier



Serialnumber

Table of Contents

Thank you	3
Specifications	4
Warning - Package Contents - Initial Setup	5
Inputs & Controls	6
Adaptive AutoBias™ - PhonoLogue MM Option	7
Tube Basics	8
Fuse Protection	9
Troubleshooting	10
Warranty Information	11

Warranty Information

Two-year limited warranty

Six-month warranty on stock vacuum tubes

Terms & Conditions

- 1. Limited to original purchaser.** This warranty is for the sole benefit of the original purchaser of the covered product, and may not be transferred to a subsequent owner.
- 2. Conditions & Limitations.** This warranty is subject to conditions and limitations, as follows. This warranty is void and inapplicable if the product has not been used in accordance with the instructions found elsewhere in this manual, or if it has been misused, abused, damaged by accident or neglect, or in transport once in possession of purchaser. The warranty is also void if the product has been tampered or has been repaired or modified by anyone other than Durob Audio BV or its specifically authorized representatives.
- 3. Remedy.** If this product contains material, manufacturing, or workmanship defects, it must be packed in original packaging and returned to Durob Audio BV or its authorized representative via insured freight, at the owner's expense. Returned products must be accompanied by written description of the defect, and a return authorization number (available from Durob Audio BV or the authorized representative via e-mail). Upon receipt of the defective product, Durob Audio BV or the authorized representative agrees to repair the product without charge for parts (except vacuum tubes if the unit is more than 6 months old), or labor. The product will then returned via prepaid, insured freight, with carrier at the sole determination of Durob Audio BV or the authorized representative. This constitutes the purchaser's sole remedy.
- 4. Design change.** Durob Audio BV and its partners reserve the right to modify their products or change specifications at any time without obligation or liability to previous purchasers.
- 5. Miscellaneous.** Any implied warranties relating to the above product shall be limited to duration of this warranty. This warranty does not extend to any incidental or consequential costs or damages to purchaser or third-parties. Our liability will be no more than the amount you paid for the product that is the subject of a claim. This is the maximum amount for which we are responsible. This warranty gives you specific legal rights. You may also have other rights which vary from country to country and state to state.

Copyright Durob Audio BV - 2005. All rights reserved.
Reproduction in whole or part of text, logo, graphics or schematics is strictly forbidden
without permission, in writing, of Durob Audio BV

The information in this manual is subject to change without further notice.

Troubleshooting

Some tips:

- No output. Power is on, but power LED is off and tubes do not light up. Mains fuse is out. Replace fuse as per instructions on page 9.
- No output. Power LED is on and tubes do light up normally. Plate fuse may be out. Replace fuse as per instructions on page 9. If the new fuse goes out immediately after replacement, contact us for further assistance.
- Noise coming from one channel. Noisy tube. First swap the 12AX7 tubes left to right. If noise follows tube swap, then you have found the problem tube. If noise does not follow, swap the 12AU7 tubes left to right.
- Hum coming from one channel. Possible bad output tube. Swap the EL-34 tubes in pairs from right to left. If hum follows the swap, swap the far left and far right tubes. If the hum returns to the original problem channel, you have found the problem tube. If not, swap the inside EL-34 tubes left to right.
- Noise/distortion coming from both channels. Tubes may be in need of replacement. Read page 8 for tube basics and replacement options.

If you try these possible solutions and problems persist, contact us or your local distributor for further investigation.

THANK YOU!

We would like to thank you for choosing our PrimaLuna ProLogue Two vacuum tube integrated amplifier as the heart of your music system. The ProLogue Two is the second member of a new family of affordable, high-quality tube products. The designers and builders of the PrimaLuna equipment all have a long history in high-end audio. We feel that it's time to offer a range of affordable audio instruments that can easily compete with today's most expensive brands.

We firmly believe that our quality level will be a difficult standard for other products in the market to match.

This PrimaLuna ProLogue amp features:

- Hand-made construction with the finest point-to-point wiring, using workmanship that is equal to or better than any product you can buy at any price.
- A heavy gauge steel, fully vented chassis with five coats of finish. Each coat is hand-rubbed and polished.
- Premium parts: toroidal transformer for power supply; custom designed -in conjunction with one of the most prestigious transformer designers in the USA- encapsulated output transformers for lowest hum; wide bandwidth for great bass and extended highs; ceramic tube sockets; ALPS volume control; Nichicon and Solen capacitors; superfast Philips-diode-circuitry; gold-plated heavy duty WBT style speaker terminals; gold-plated, panel-mounted input jacks.
- SoftStart™ circuit for extended life of sensitive components, plus a reduced chance of tube failure from thermal shock.
- Adaptive AutoBias™ exclusive to PrimaLuna, this circuit monitors and smoothly adjusts bias constantly and instantly, reducing maintenance and increasing performance due to the dramatic reduction in distortion.
- Tube plate fuse to protect the amp output stage. Other amplifiers might need a trip to the shop if a tube fails; not this one- just plug in a new tube, fuse, and go.

Premium tubes are available from us and other parties if you wish to upgrade. In USA, Upscale Audio's inventory of New Old Stock tubes is the largest you can find. Elsewhere, independent suppliers can assist you to make your best choice.

We hope that the PrimaLuna ProLogue Two amplifier will make you want to follow our next steps in expanding this new range of products. If you have any questions or comments, don't hesitate to contact us. You can also share your thoughts with others at www.audioreview.com or other review sites. On the www.primaluna.nl website you will find links to these and other websites. Our prices are kept low by using word-of-mouth and customer feedback, and we would appreciate hearing what you have to say about our product. If you need service during or after the warranty period, contact us.

Thanks again for your support!

Ricardo Franassovici
ABSOLUTE SOUNDS

Herman van den Dungen
DUROB AUDIO BV

Specifications

Power	40 Watts per channel
Frequency Response	20Hz - 30 kHz +/- .5 dB
THD with AABB	0,25% @ 1W; less than 1% up to full power
S/N Ratio	89 dB
Input Impedance	65 kOhm
Input Sensitivity	240 mV (for rated power at maximum volume setting)
Maximum Gain	37,5 dB
Power Consumption	300 Watts
Net Weight	37.5 lbs / 17 kg
Shipping Weight	41.9 lbs / 19 kg
Dimensions	15.5" x 11" x 7.5" / 395 mm x 280 mm x 190 mm (L x W x H)
Shipping Dimensions	18.3" x 15" x 12" / 465 mm x 380 mm x 305 mm (L x W x H)
Inputs	4 pairs RCA
Outputs	4 & 8 Ohm Speaker Taps
Tube Complement	4 x KT-88 2 x 12AX7 2 x 12AU7

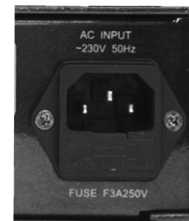
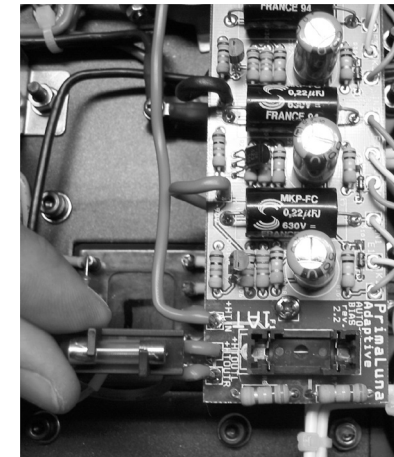
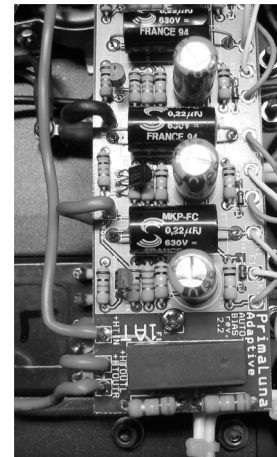
Fuse Protection

A note on fuses: If "someone who knows" tells you to wrap fuses with aluminium foil to avoid wasting money on new ones, it's best not to take his advice. Fuses are safety valves. They should always be replaced with the exact same value and type.

Warning: Never attempt to check or replace a fuse while the amp is plugged in. Turn it off and unplug all speakers, components and AC cords before continuing. Wait 10 minutes to let tubes cool down and the circuit to fully discharge.

Plate Fuse:

The plate fuse is located inside the amp, on top of the Adaptive AutoBias™ board. To replace it, remove the bottom plate using a Phillips #2-type of screwdriver. The fuse is located in a small plastic case on the end of the Adaptive AutoBias™ board. Refer to the pictures on this page. Remove the top cover. The fuse will be held on by the cover. Remove it by twisting the fuse out of the holder. Replace with a 1Amp slow blow 5 x 20 mm fuse. The cover will snap back into place. Re-install bottom plate of the amp.



Mains Fuse:

The mains fuse is located on the rear of the amplifier, just below the power cord socket (see picture on this page). The fuse rating is 5Amp slow blow 5 x 20mm for 100-120VAC and 3Amp slow blow 5 x 20mm for 200-240VAC . Replace with the same type and value fuse! The fuse holder can be snapped out using a small slotted flat blade screwdriver.

PrimaLuna® ProLogue Two

Tube Basics

The 12AX7 and 12AU7 tubes will have a life of about 5,000 to 10,000 hours. The lives of powertubes are more difficult to predict. This also depends on how "gently" or "roughly" you use your amplifier. In general -under normal conditions- you can say between 2,000 and 3,000 hours.

Here are some tips on using tubes:

- Do not use treatments on tube pins or in sockets.
- If you decide to experiment with other tube types, it's best not to swap tubes in and out repeatedly, as you never want to cycle amplifiers on and off rapidly. They should be left off for at least five minutes. Further, every time you insert a tube, you stand a chance of loosening the tube sockets. It's okay to have fun, and we support that, but don't go crazy and swap tubes in and out twenty times in a day.
- Do not leave the amplifier on 24 hours a day. Just a short warm-up is required for the PrimaLuna to get into its groove.
- Break-in yields improvements. Every tube, when new, needs to be left alone for a little while. So, when your amplifier is new, or when you re-tube it, it may take a little time to settle in. There is however no fixed "time rule" for break-in.
- Please note that tubes can vary electrically, and by plugging in the wrong type of tube (i.e. 6922 for a 12AX7) you can damage the amplifier and void your warranty.

Common replacements:

- **12AX7:** ECC83, ECC803S, E83CC, 7025, CV4004. You can also use a 5751, but please note that the 5751 is a lower gain tube than a 12AX7 and the sound will be altered.
- **12AU7:** ECC82, ECC802S, E82CC, 5814, 6189, CV4003
- **KT-88:** 6550, KT-90. You may also use EL-34, 6L6GC, 7581A and KT66 though power will drop slightly.



Topview picture of ProLogue Two

PrimaLuna® ProLogue Two

Warning

To prevent serious injury, electrical shock or fire:

- Do not operate with bottom plate removed.
- Keep away from rain and moisture.
- Always disconnect all cable connections to and from amplifier before changing fuses and/or tubes.
- Do not replace fuses with any fuse other than the same type and rating as used by the factory.
- Do not replace tubes without reading instructions.
- Do not replace fuses or tubes if you have any doubt about your ability to do so. We accept no responsibility for any personal or material damage due to incompetent use or users.

Package Contents

ProLogue Two Integrated Amplifier	1
Power Cord	1
This Owner's Manual	1
White Gloves	1 pair
Tube Complement	4 x KT-88 2 x 12AX7 2 x 12AU7
Main Fuse	1 x 5Amp slow blow 5 x 20mm for 100-120VAC or 1 x 3Amp slow blow 5 x 20mm for 200-240VAC
Plate Fuse	1 x 1Amp slow blow 5 x 20 mm

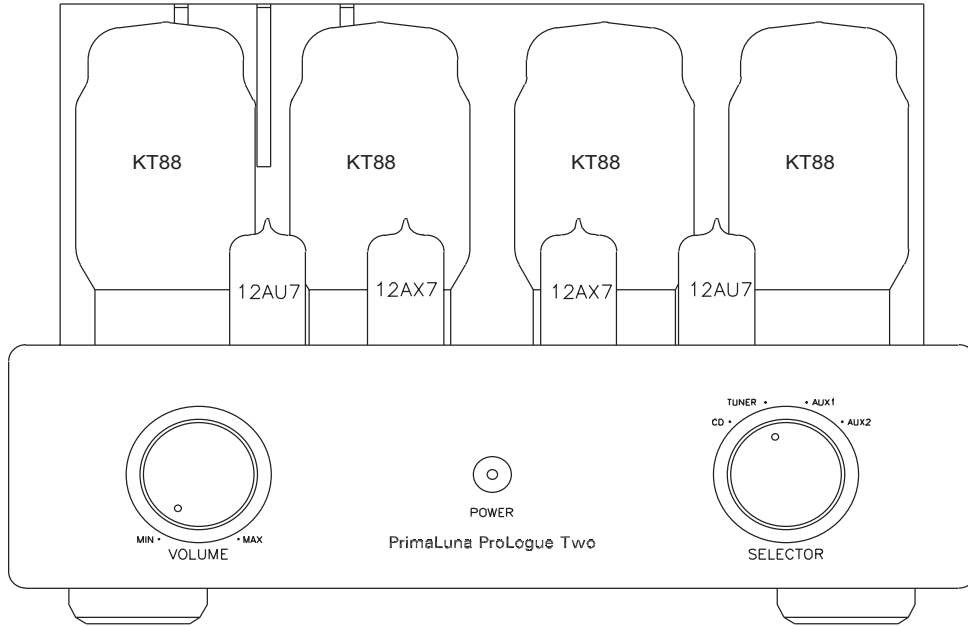
Initial Setup

- Carefully remove the ProLogue Two from its packaging. Use the white gloves to prevent fingerprint smudges.
- Remove the tube cage by carefully pulling it up and away from the amplifier.
- Remove the protective foam surrounding the tubes.
- Tubes are already installed. Check that each tube is firmly seated in its socket. Use gloves.
- Replace cage back in its place if desired.
- Check to see the power switch is off (down).
- Connect each source to the corresponding plugs.
- Connect your speaker wires, positive to positive, negative to negative. This unit is non-inverting.
- Plug the powercord in the wall socket and in your amplifier.
- Switch the amplifier on.
- The tubes will be warmed up and ready to use in about 30 seconds.

PrimaLuna® ProLogue Two

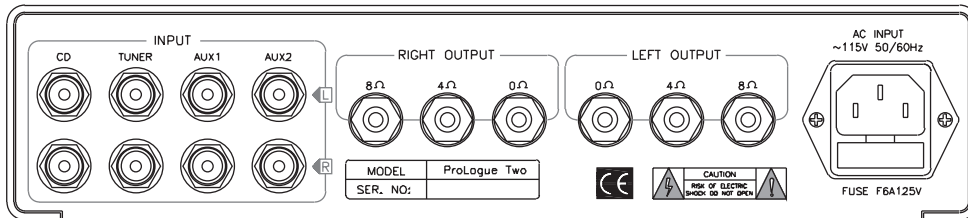
Inputs and Controls

Front Panel



The front panel of the PrimaLuna models is made from machined aluminium, finished to match the blue metallic chassis. The volume is controlled with the knob on the left, source selection is on the right. Your sources are labelled CD, Tuner, Aux 1 and Aux 2, but all are interchangeable. There is no functional difference between the inputs. The power switch is located on the left side of the amp, just behind the front plate.

Rear Panel



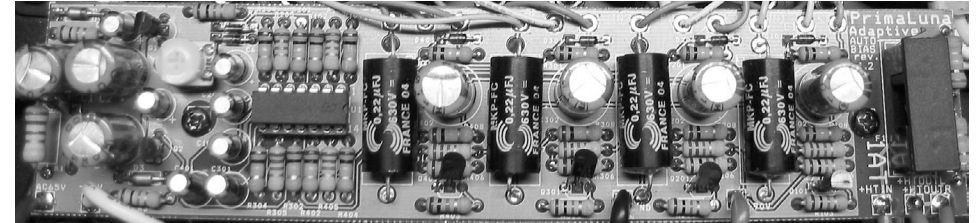
Looking at the rear panel, you will note you have four inputs and the pair of speaker terminals. Attach the positive (+) from your loudspeaker to the 4 or 8 ohm terminal that most closely matches the average impedance of your loudspeakers according to their manufacturer's specifications. The negative (-) from your loudspeaker attaches to the 0 Ohm terminal.

Tip: Experiment using the 4 or 8 Ohm positive (+) terminal to find what's the best match with your speakers. Do not make any assumptions. Trust your ears.

PrimaLuna® ProLogue Two

Adaptive AutoBias™

Exclusive to PrimaLuna, this circuit monitors and smoothly adjusts bias constantly and instantly. The genius of this design is that the Adaptive AutoBias™ actually improves the overall sound quality and performance of the amp. Between 12 and 30 Watts, measured distortion levels drop by over 40%. In addition, tubes do not have to be matched, and there is no bias (re-)adjustments needed, ever. Furthermore, the PrimaLuna is equipped with Soft-start™, which brings the amplifier on line slowly to prolong the life of internal components, including the tubes. This makes the PrimaLuna a joy to own and operate.

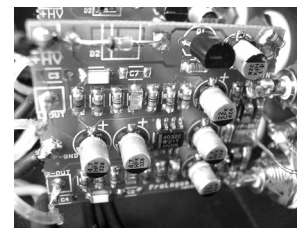


While matched tubes are not a requirement, it is still recommended if you want to get the very best results. You can get the very best in replacement tubes as well as rare vintage NOS (New Old Stock) tubes from us and other parties if you wish to upgrade. In the USA, Upscale Audio's inventory of New Old Stock tubes is the largest you can find. Elsewhere, independent suppliers can assist you to make your best choice.

PhonoLogue phono stage (optional)

Your ProLogue Two integrated amplifier comes without a phono stage, but we have a high quality optional internal phono stage available. The PhonoLogue phono stage can be installed at any time by your dealer or any qualified person.

The PhonoLogue MM phono stage with RIAA equalization, requires no extra plugs or connectors. It fits (by soldering) on the existing RCA's of one of the inputs. It provides superior sound quality on a tiny footprint. We use Surface Mount Technology implementation for shortest signal paths as well as minimum parasitic capacitances and inductances. Excellent parts throughout, selected on sound quality as first priority: miniature film capacitors, minifilm resistors, superior opamp for highest accuracy, lowest noise, highest speed and most robust drive capabilities into the RIAA correction stage, resulting in a very detailed, open and lifelike sound from any LP record. Low impedance electrolytics, super low-noise powersupply. Dimensions: small as a big stamp!



Specifications:

Input Impedance:	50 kOhm
Gain:	42dB (127x)
Frequency Response:	10Hz - 50kHz
RIAA accuracy:	<0,5B 20Hz - 20kHz
Overload Margin:	>20dB rel 5mV
Harmonic Distortion & noise:	-83dB
Size:	3,2 x 3,8 cm (1.26" x 1.5")