


METRONOME  TECHNOLOGIE  
PREMIUM INTEGRATED CD PLAYER



Le Player® User Manual



## Table of Contents

---

<b>1 – Important Safety Instructions</b> .....	1
1-1 Warnings.....	1
1-2 Safety Instructions .....	1
<b>2 – Company Profile</b> .....	2
<b>3 – Introduction</b> .....	3
<b>4 – Design specificities</b> .....	4
<b>5- Unpacking</b> .....	4
<b>6- Utilization</b> .....	5
<b>7 – CD8 Signature CD Integrated</b> .....	5
7-1 Installation.....	5
7-2 Front view .....	6
7-3 Back view.....	7
7-4 Utilization.....	7
7-4-1 Power on.....	7
7-4-2 Listening .....	7
7-4-3 USB Input.....	8
7-4-4 Digital & Analog outputs .....	8
7-4-5 Cleaning .....	8
7-4-6 Technology.....	8
<b>8 – USB Driver Installation</b> .....	9
<b>9 – Remote control</b> .....	15
<b>10 – Technical specifications</b> .....	16
<b>11 – Warranty</b> .....	17



# 1 – Important Safety Instructions

## 1-1 Warnings

- In order to avoid any risk of fire or electrical shock, maintain the unit in a dry place. Do not expose to humidity.
- Before connecting and operating the product, please attentively and fully read the present manual.
- The power supply generates dangerous voltages for the human body:
  - Do not introduce any metallic object by the top cover airing neither on the connectors.
  - Never dismantle the upper hood if the unit is not unplugged. For any intervention, please contact your retailer
- Install the product securely on a stable surface.
- During operation do not touch the vacuum tubes (if any): they may be hot.
- Product characteristics, specifications and conception can be subject to modifications without prior notice.

## 1-2 Safety Instructions

- ALWAYS disconnect your entire system from the AC mains before connecting or disconnecting any cables, or when cleaning any component.
- A three-conductor AC mains power cable which includes an earth ground connection must be used. To prevent shock hazard, all three connections must ALWAYS be used.
- Original AC main power cable is recommended to use this product.
- NEVER use flammable or combustible chemicals for cleaning.
- NEVER operate this product with removed cover.
- NEVER wet the inside of this product with any kind of liquid.
- NEVER pour or spill liquids directly onto this unit.
- NEVER block air flow through ventilation slots or heat-sinks.
- NEVER bypass any fuse.
- NEVER replace any fuse with a value or type other than those specified.
- NEVER attempt to repair this product: contact your retailer.
- NEVER expose this product to extremely high or low temperatures.
- ALWAYS unplug sensitive electronic equipment during lightning storms.

## 2 – Company Profile

METRONOME TECHNOLOGIE Ltd. is a French company founded in 1987. We design and manufacture High-End Audio systems.

### Métronome Technologie

750 rue de Bardazou  
FR-81800 Roquemaure

France

Phone number: +33 (0)5 34 26 11 33

Email: [contact@metronome-technologie.fr](mailto:contact@metronome-technologie.fr)

METRONOME TECHNOLOGIE has developed different ranges of products:

- CD players,
- Digital to Analog Converters,
- CD transports,
- Amplifiers/Preamplifiers/Power Amplifiers.

The company aims to achieve two main objectives:

- Get the best sound that digital and analog components can provide, by applying the most advanced technology available;
- Give a pure design to its products to combine aesthetic and technology.

Therefore, Le Player<sup>®</sup> is the result of a long technical research and countless hours of listening.

This CD player was developed to satisfy the largest number of users.

### 3 – Introduction



Congratulations for acquiring the METRONOME TECHNOLOGIE Le Player® Integrated CD player!

METRONOME TECHNOLOGIE designs and hand manufactures audio high-end sources.

The development of a METRONOME TECHNOLOGIE product is animated by a philosophy which aims to reproduce the sound with all nuances and original emotion without altering the recorded signal.

The Top loaded CD Integrated is made of material selected for their ability to deliver the best sound. Le Player® presents an innovative design and an aesthetic way to extract digital information for the best sound from CD media.

Please feel free to ask METRONOME TECHNOLOGIE about any purchase or technical detail information by connecting to the website:

[www.metronome-technologie.com](http://www.metronome-technologie.com)



## 4 – Design specificities

- Single PCB part design dedicated to the reading mechanism, servo, user control and analogue stage outputs.
- Power supply with individual power transformers and complete independent lines power, providing an inter-stage EMI/RFI radiation protection.
- Delrin clamp for better CD stability and low jitter.
- Professional drive mechanism with proprietary modifications.

## 5- Unpacking

Le Player® CD IntegratedPlayer has been packed in one specially-designed box.

1. Carefully unpack the machine: be careful when lifting the unit; you may need a second person's help.
2. Please carefully preserve packages and protections, they will be useful for the unit shipment in case of maintenance. Please note that the warranty will be considered as cancelled if the units are dispatched uncorrectly packed.
3. Please make sure to read the "Important Safety Instructions" chapter before continuing.

The box contains:

- Le Player® CD Integrated Player;
- Main electrical cord;
- Accessories:



- A remote control;

- A DELRIN® clamp;



## 6- Utilization

Le Player® Internal Power Supply is adjusted for a nominal voltage corresponding to your country's electrical network.

If it fails to operate:

- A. Turn off Le Player®.
- B. Check fuses.
- C. If there is no difference, please contact METRONOME TECHNOLOGIE factory.

The front panel display indicates the unit state: when the display is alight, the power supply is operational.

This power supply can be switched on during a long period. However, for a prolonged absence, it is advised to switch it off, with the switch on the machine rear panel.

This power supply is protected by internal electronic circuits and by a general fuse situated in the block near the main chord, beside the switch. To change the fuse, it is imperative to firstly unplug the main cable, then open the fuse compartment with a screwdriver and replace the fuse by an identical model: 1 Ampere slow blow. The product is delivered with a second fuse.

**WARNING:** Never modify the value of the fuse.

Note: after a long period without functioning, the fuse may burn out when the power supply is switched on. Indeed, when the power supply is completely discharged while it is switched on, there is a very important current consumption during a brief instant.

## 7 – Le Player® CD Integrated Player

### 7-1 Installation

- Install Le Player® on the hi-fi unit or on a stable and strong support.
- Do not install directly on a carpet or an inflammable material.
- Do not put any object on the top.

## 7-2 Front view



- ① Display & IR: to show various information – such as the CD track number being played, its state of advance in playing, the repeat functions (1 or all) and pauses; Infrared Receptor for remote control.
- ② Main switch: push up to power the device ON, and push down to power the device off.
- ③ Previous track: to select the CD previous track.
- ④ Stop: to stop Le Player® from playing the CD currently in the machine.
- ⑤ Play: to start playing the CD currently in the machine.
- ⑥ Next track: to select the CD next track.
- ⑦ USB/CD switch: this switch allows choosing the signal to use with internal DAC.
- ⑧ Drawer: must be opened to introduce the CD.

If the switch is up (USB), the internal DAC is able to convert digital signal provided through the USB module. In down position (CD), the internal DAC decodes signal coming from CDM12Pro mechanism.

## 7-3 Back view



- ⑩ Power connector
- ⑪ RCA S/PDIF: S/PDIF digital output \*
- ⑫ USB INPUT: must be directly connected with a personal computer (drivers required). It is also possible to read digital tracks encoded up to 24 Bits/192 KHz.
- ⑬ BALANCED RIGHT: Right balanced output
- ⑭ UNBALANCED RIGHT: Right unbalanced output
- ⑮ UNBALANCED LEFT: Left unbalanced output
- ⑯ BALANCED LEFT: Left balanced output.

\* **Note:** this digital output allows the use of Le Player® as a CD transport ONLY WITH METRONOME DACs

## 7-4 Utilization

### 7-4-1 Power on

Now you can switch on Le Player®. In order to do so, push switch [8] on upper position. If Le Player® drawer is open, the display indicates "OPEN".

Le Player® can be switched on during a long period. However, for a prolonged absence, it is advised to switch it off, with the switch [8] on the machinefront panel.

### 7-4-2 Listening

Put a CD into Le Player®, be careful not to forget the clamp. Once the drawer is closed, the CD initializes. Le Player® reads the CD T.O.C, indicates tracks number and total time. Then the CD player stops waiting for a user's order. You can begin to listen to the music by pressing on your Le Player® board the switch [4]. For other functions, please refer to 7-2 section.

Note: Le Player® can be driven with the remote control (please see 9<sup>th</sup> section).

### 7-4-3 USB Input

Le Player® has a high resolution USB Input. This input is able to read digital tracks up to 24 bits/192 kHz. Based on asynchronous communication protocol and very high-quality oscillators, this module provides an excellent quality digital signal to the DAC, with very low jitter (compared to the synchronous protocol).

This module is compatible with all formats from 16 to 24 bit and from 44.1 KHz to 192 KHz.

### 7-4-4 Digital & Analog outputs

Le Player® includes 1 digital output & 4 analog outputs:

- Output [10] is S/PDIF format output.
- Output [12] & [13] are right and left unbalanced 24 Bit/96 KHz sampled outputs.
- Output [11] & [14] are right and left balanced 24 Bit/96 KHz sampled outputs.

### 7-4-5 Cleaning

To clean Le Player®, use a SOFT CLOTH with non-abrasive cleaning product.

### 7-4-6 Technology

- **Power supply:** the power supply is integrated into the drive and has separate and independent regulations for the different sections of the drive. With Le Player®, all transformers were replaced by high-quality toroidal transformers, in order to decrease vibrations and increase fast power transitions.
- **Le Player® CD Integrated:**
  - Le Player® has one internal DACs (24 Bit/192Khz). Converter chip was selected for their high audio quality. These chips are one of the most musical and precise DAC available today.
  - The digital output is totally independent and the user does not have the possibility to choose the Sampling Frequency fixed to 44.1 KHz.
  - The analog stage :
    - Le Player® is developed with 4 OPA 604 using a Class A polarization diagram, the best to obtain a high bandwidth. The output impedance is low, so there is no loss in high frequency. The user has the possibility to drive unbalanced or balanced pre-amp.
    - Le Player® integrates 2 JAN6922 using a Class A polarization diagram, the best to obtain a high bandwidth. The output impedance is low so there is no lose in high frequency. The user has the possibility to drive unbalanced or balanced pre-amp.

## 8 – USB Driver Installation

### WARNING

Before installing drivers for MAC OS or WINDOWS  
Check your system version !

To obtain your Apple OS, please read below:

- First click on “apple icon”, then on “about this Mac”.



- Once you clicked on “about this Mac”, a new window is opened. You should be able to read your current system version.



- Once you know your MAC OS version, please install the correct driver version as explained below:
  - For MAC OS version 10.4.XX: (TIGER)
  - For MAC OS version 10.5.XX: (LEOPARD)
  - For MAC OS version 10.6.XX and 10.7.XX: (Snow Leopard & Lion)
  - For MAC OS version 10.8.XX (Mountain Lion)
  - For MAC OS version 10.9.XX (Mavericks)
  - For MAC OS version 10.10.XX (Yosemite)

Use the drivers included into the corresponding directory \*X:\MAC\OS 10.X.XX

\*X:\ the letter could be different on your system, corresponding to your local CDROM reader.

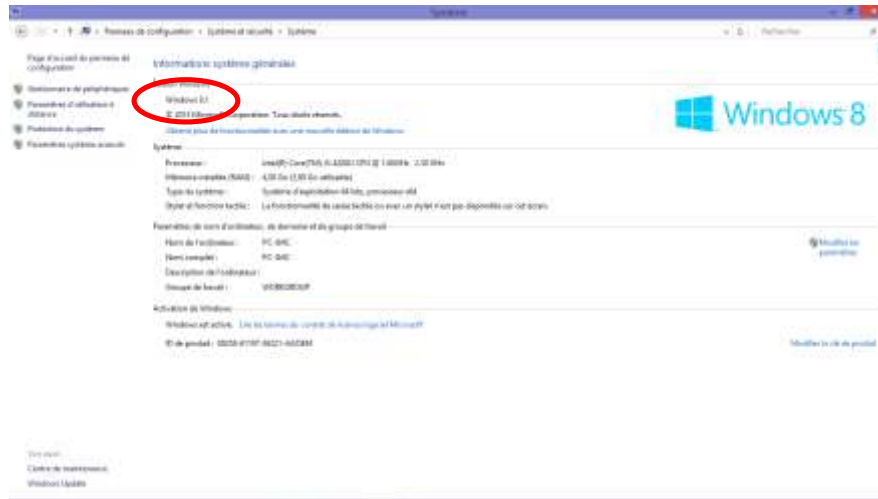
- If you installed wrong drivers, please uninstall them by following instructions below:
  - Open a console, and then type the following commands – the console is located into Finder/Applications/Utilities:
    - `sudo mv /System/Library/Extensions/Hiface.kext /tmp`
    - `sudo touch /System/Library/Extensions`
    - `sudo pkgutil --forget com.m2tech.driver`

Then, restart the Mac.

To obtain your Windows version, please read below:

Click on “start”, then “control panel” and finally on “system” icon.

- With Windows 8/ 7, you should be able to see a similar window as below :



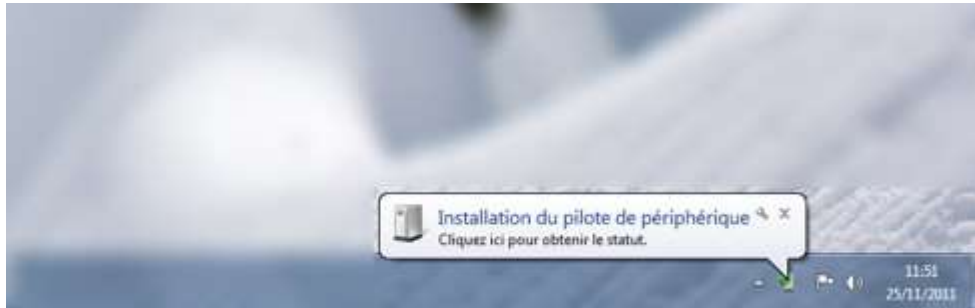
To install your Metronome Async USB 24 bit/192 kHz interface, please use drivers from the corresponding folder of the CDRom attached on the last page of your user manual.

- On Windows XP, you should be able to see a similar window as shown in the picture opposite.



To install your Metronome Async USB 24/192 interface please use drivers from the corresponding folder from the CDRom attached on the last page of your user manual.

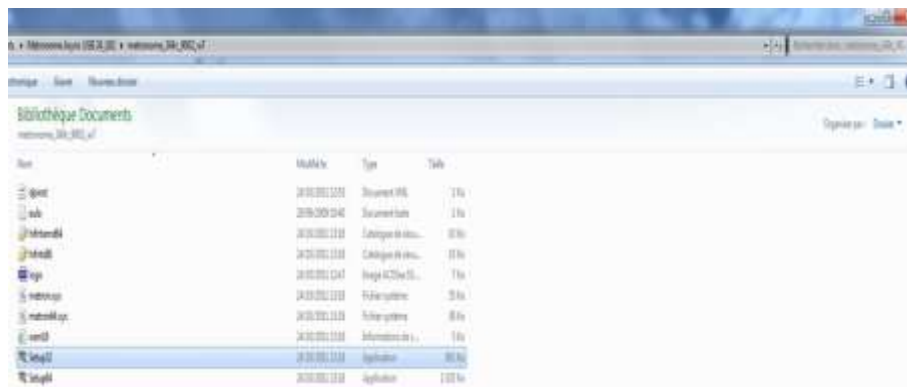
- Step 1: Connection with USB module ...



- Step 2: Search the driver on the CD Rom provided ...

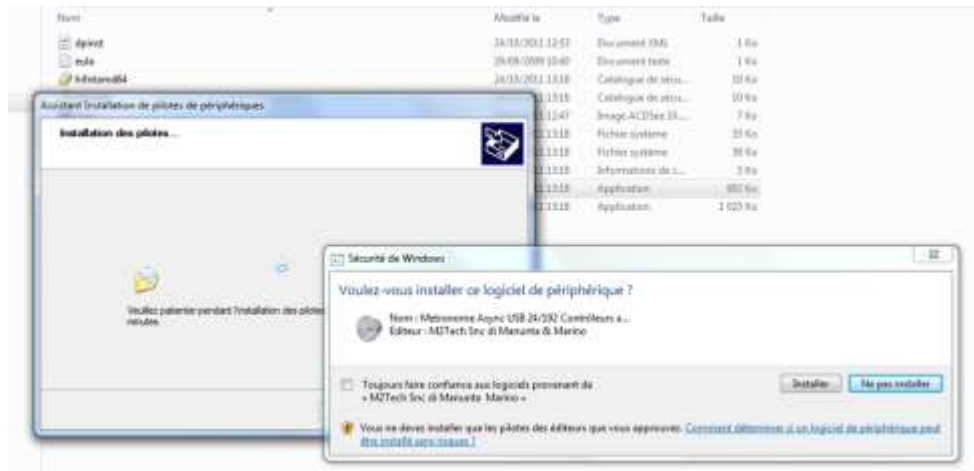


- Step 3: Click on the application file corresponding with your OS ... (Windows 32/64 bits or Mac OS)





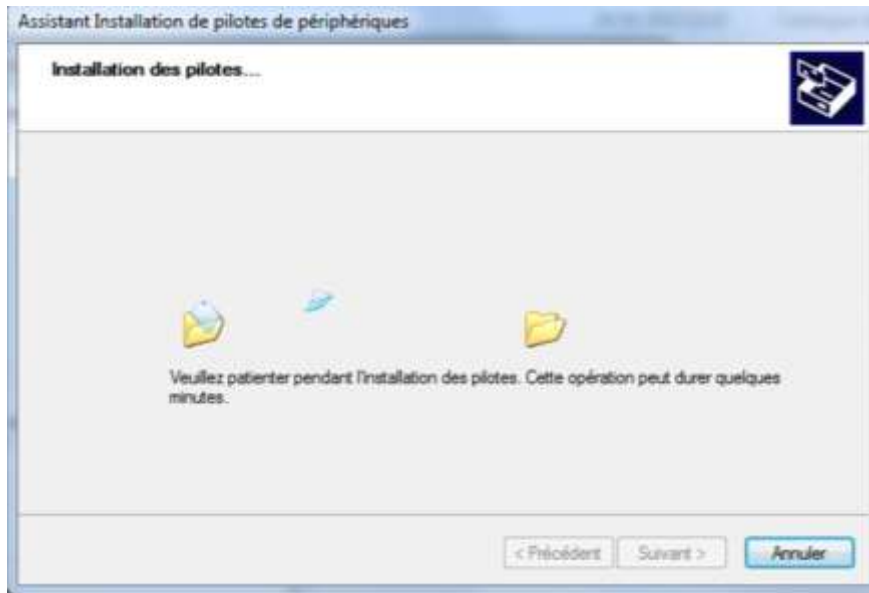
- Step 4: Check the box and click on "install".



- Step 5: Click on "next".



- Step 6: Installing...



- Step 7: Congratulations, the installation is completed...



## 9 – Remote control



- Please carefully unpack the remote control.
- Please carefully preserve packages and protections, they will be useful for the unit shipment in case of maintenance.
- To clean the remote control, please use a soft and non-abrasive cloth. Never use a ny solvent or chemical products.  
For finger prints, only use a window-pane cleaning product.
- This remote operates with 2 batteries CR2025 (included).
- Direct access to the disk tracks by pressing on [0] to [9] keys.
- **PLAY TRACK** function by pressing on the key: ▷
- **NEXT TRACK** function by pressing on key: ▷▷
- **PREVIOUS TRACK** function by pressing on key: ◁◁
- **PAUSE** function by pressing on key: ||
- **STOP** function by pressing on key: □
- **REPEAT** function by pressing on key [REP]:
  - By pressing this key once, the drive plays the disk indefinitely;
  - By pressing the key twice, the drive plays the current track indefinitely;
  - By pressing the key three times, the drive operates on normal play-mode.

Note: for a correct function of the remote, we recommend a 40° max angle of incidence with the receptor.

## 10 – Technical specifications

- **PICKUP MECHANISM:**
  - Métronome proprietary CD transport
- **DIGITAL INPUT:**
  - 1 USB Input, USB Type B connector, Sampling Frequency : From 32 to 192 KHz
- **DIGITAL OUTPUT: 1 output**
  - RCA S/PDIF 75 OHMS, Output sampling Frequency: 44.1 KHz
- **ANALOG OUTPUT:**
  - Unbalanced: 2.5 V RMS @ 0dB - 600 Ohms - Connector RCA
  - Balanced: 2.5 V RMS @ 0 dB - 600 Ohms - Connector XLR
  - Total Harmonic Distortion: -95dB Max
- Gain Error: 0.12dB Max
- Frequency bandwidth: 10 Hz 50 KHz +/- 0.1 dB
- Signal/Noise Ratio: more than 95 dB
- Phase rotation: +/- 1°
- **INTERNAL POWER SUPPLY:**
  - Voltage: 100 VAC +/- 10% - 50/60 Hz - Japan
  - Voltage: 120 / 240 VAC +/- 10% - 50/60 Hz - Other
  - Consumption: 60 VA Max
- **OTHER CHARACTERISTICS:**
  - Box dimension: W x H x D : 450 x 120 x 420 (mm)
  - Weight: 15 Kg

## 11 – Warranty

METRONOME TECHNOLOGIE Ltd. guarantees the components of your METRONOME TECHNOLOGIE product for two years from the purchase date.

In the event of a product failure, METRONOME TECHNOLOGIE will repair, readjust and should the occasion arise, replace the units providing that all the clauses contained in the warranty are met.

In order to initiate service of any kind, it is necessary to firstly obtain distributor or dealer authorization and then, ship the prepaid unit.

Any of the following conditions shall void the warranty:

1. Operations not in accordance with this manual.
2. Abuse, accident or unauthorized modifications as determined by METRONOME TECHNOLOGIE Ltd. exclusively
3. Serial numbers removal, defacing or falsifying.
4. Shipping without the complete factory cartons.

METRONOME TECHNOLOGIE Ltd. shall not be liable for any accidental damages regarding operation, failure, troubleshooting or repair of your Le Player®.





