

Kalista

ART OF MUSIC

CD TURNTABLES



KALISTA CD TURNTABLES

Unveiled in 2003, Kalista was designed to be an exceptional piece of art and an audio device with outstanding musical performances. It was recognized along the years as one of the best CD transports ever, with its unique turntable design.

The sound quality of Kalista is the result of a combination of long years electronic knowledge of our engineers and the top quality materials used to build the device.

Based on the best CD transport mechanism ever developed by Philips research, Kalista is able to take the best of your CD recordings, with the finest details and highest musicality.

All Kalista units are 100% designed and handcrafted in our workshops in the South of France. Each Kalista is unique and has to pass long series of tests before being validated by our engineers.



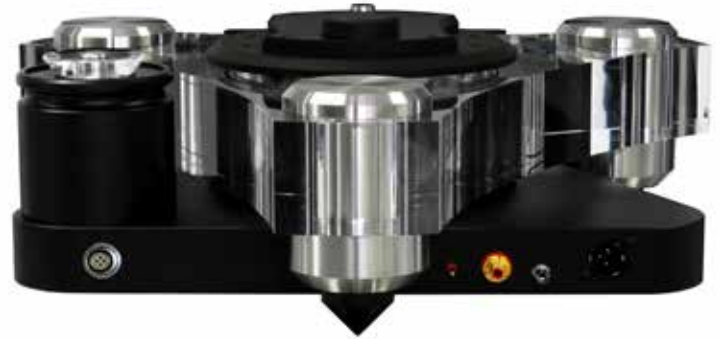
The Kalista CD Turntable

MODELS AND TECHNICAL FEATURES



Front view of the Calypso Turntable

Pickup mechanism



Rear view of the Kalista Turntable

Digital outputs (16 bits / 44.1 kHz)
S/PDIF 75 Ohms RCA connector
AES/EBU 110 Ohms XLR connector
ATT/ST fiberglass output

Philips CDM 12 Pro 2 v. 6.8 includes Métronome proprietary improvements and specific Delrin clamp.



Front view of Elektra optional power supply

ELEKTRA Power supply
EMI rejection by Schaffner filters
3 main high quality toroidal transformers and 7
separate and independent regulation lines



Remote control



Triangle silent base

ABSOLUTE PIECES OF ART

The Kalista range by Métronome is considered the more unique and luxurious high-end devices in the world. Since the first generation of the CD turntable Kalista unveiled in 2003, the range has improved and is now made of Kalista's sixth generation and Calypso CD turntables, and Nausicaa DAC.



Calypso



Kalista



Nausicaa



All our products may now come with specific customer's finishings, like this gorgeous gold Kalista designed in 2014 for a lucky audiophile!

Kalista
ART OF MUSIC

www.kalista.audio
kalista.audio
info@kalista.audio