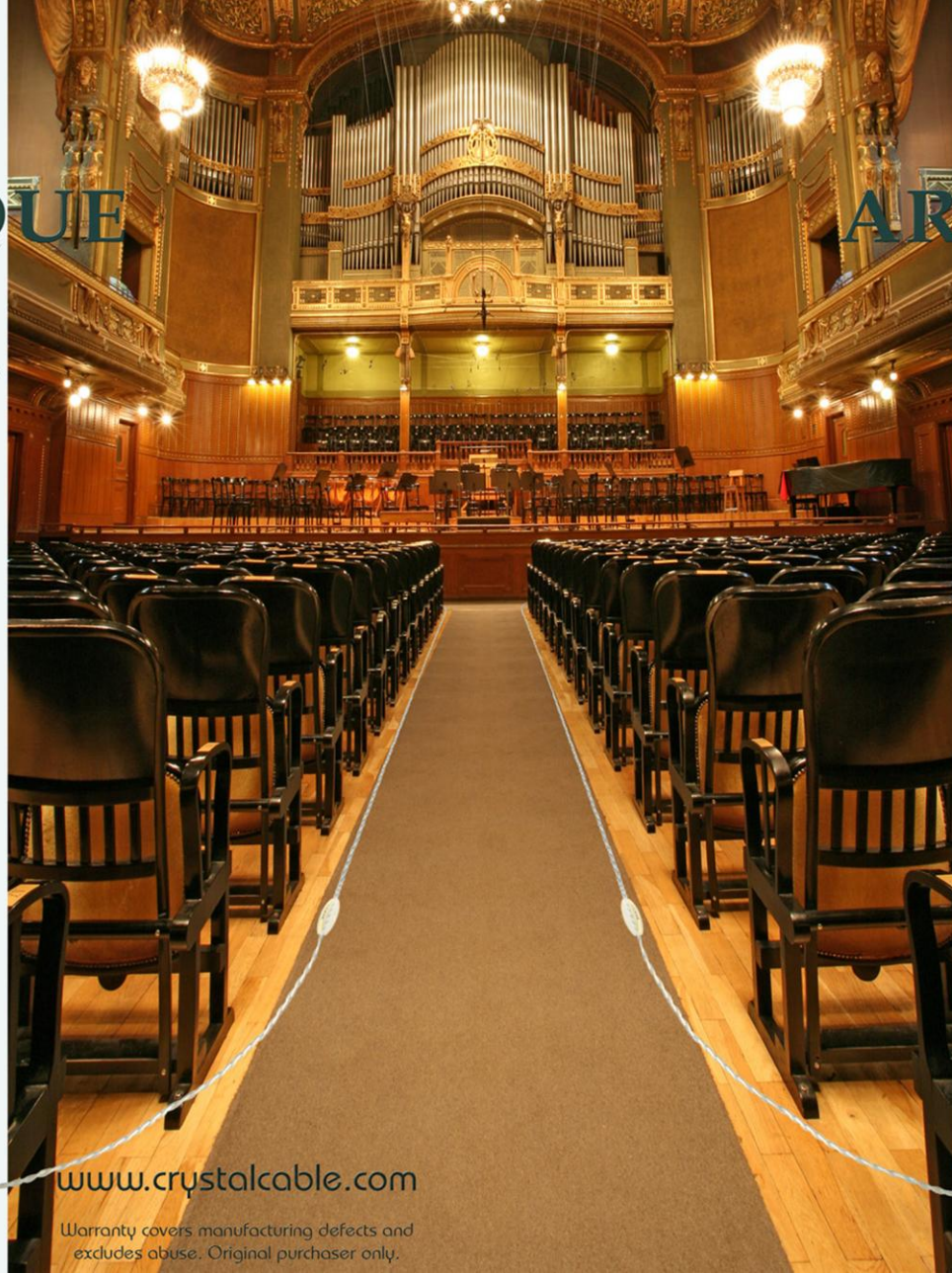


# ARABESQUE

by



# ARABESQUE

by



[www.crystalcable.com](http://www.crystalcable.com)

Warranty covers manufacturing defects and excludes abuse. Original purchaser only.



# ARABESQUE

by



The World's Most Transparant Loudspeaker!  
Soundwise.

## Arabesque

means ornament. It's a gorgeous, natural shape, smooth, gentle, beautiful and touching – just like a teardrop, and just like music. The shape of the striking cabinet and its acoustic behavior were extensively modeled using the sophisticated, multiphysics software Comsol<sup>®</sup>, before being constructed in glass, an ideal material from which to form a speaker cabinet. The irregular section, devoid of parallel faces, helps to eliminate cabinet induced distortion, while wide dispersion helps the Arabesque work in almost any environment. Careful matching of drivers, crossover and the cabinet design means that nearly no internal damping is required, maintaining the efficiency, dynamics and speed of the performance.

The Arabesque shape brings us back to nature, and so does the material used for the cabinet: natural facet-cut glass. Sound and music are natural too. There might be no technology that can exactly reproduce the experience of live music, but Arabesque is the closest you can get to pure and natural sound.

Nature and technology work hand in hand to create this unique product, one that presents classical, jazz or rock music as a realistic, live experience.

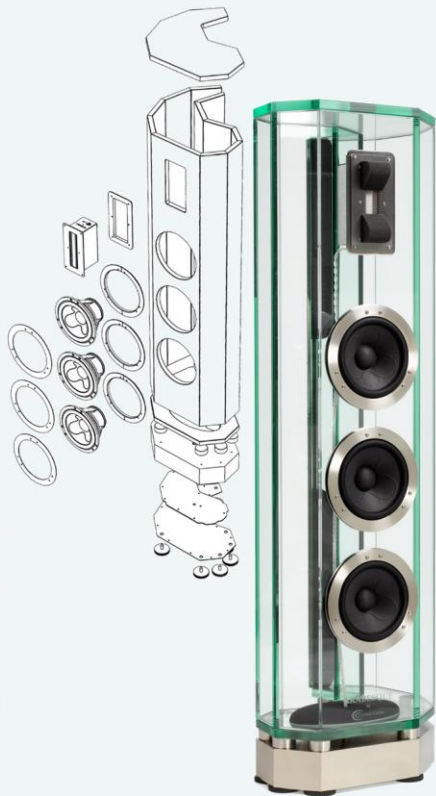




### Creating the Arabesque

Using advanced technology and exceptional materials, Crystal Cable chose to challenge convention. Comsol® modeling allowed us to understand not just how the speaker itself behaves, but how it will react to the differing acoustic conditions imposed by various room shapes and situations. Crystal Cable is one of the only companies to actually apply predictive engineering in this way to truly optimize a loudspeaker for a multitude of different rooms.

The Arabesque shape is a stunning breakthrough. This complex enclosure is not only free of intrusive resonance and standing waves, but is also capable of extremely fast and powerful bass as well. Specially modified Scan Speak Illuminator bass-mid drivers were chosen for their wide working bandwidth and ability to integrate seamlessly with the specially made RRAAL ribbon tweeter that extends the range to 100kHz. Unbelievably fast, this drive unit is another reason why the Arabesque redefines transparency.

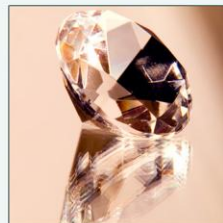
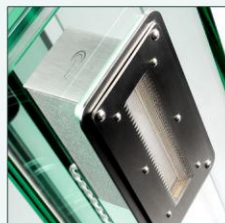
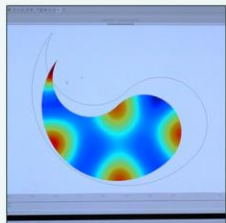


### Artistic Design

Talking of transparency, the cabinet is made of 19 mm (3/4 inch) natural glass strips, facet cut, and invisibly glued to create a svelte, artistic design. The completely transparent cabinet allows you to see and appreciate every component inside, while the heavy base is milled from a solid block of high-grade aluminum and perfectly matched to the cabinet's dimensions. It is fully adjustable (7-point adjustment) to allow leveling of the speaker on any surface, and also houses an advanced passive crossover, made with the highest-grade German components. Internal wiring is executed entirely in Crystal Cable Dreamline conductors. The Arabesque by Crystal Cable is a genuinely state-of-the-art, high-end loudspeaker, as well as a fine piece of art. Its unique combination of technology and materials make it both musically and visually transparent. It really must be seen AND heard for it to be fully appreciated.

Crystal Cable chose to challenge convention

The Arabesque by Crystal Cable is a one-of-a-kind loudspeaker that redefines transparency





**Technical Specifications:**

Frequency Range: 27Hz-100kHz(-3dB)

Crossover frequency: 2000 Hz

Crossover: electrical 2nd order,

electro-acoustic 3rd order

(with high-grade Tritex air cored inductors  
and silver-foil capacitors)

Power handling: Max. 315W RMS

Total harmonic Distortion: <0.5% from  
70Hz-20kHz

Max SPL: 115dB

Peak input power: 600W

Efficiency: 95dB @ 2,83V

Impedance: 4 Ohm nominal

Recommended Amplifier power: 20W or  
more.

Weight: approx. 100 kg /220 pounds each  
(net)



# ARABESQUE

by



See the music.



Each piece of Arabesque is carefully handmade in Germany and The Netherlands.

