

# Dream'E

by DreamVision



Discover Cinema through the Eye of an Eagle



The **Dream'E**, the new DreamVision **Full HD projector**, features a native resolution of 1920x1080 and 15 000:1 contrast ratio. Its **HDMI 1.3** inputs, Cine-Motion compatibility and integrated 2.35 THEATRE Mode, make the **Dream'E** the ideal future proof projector for every Home Cinema installations.

## Much more than meets the Eye

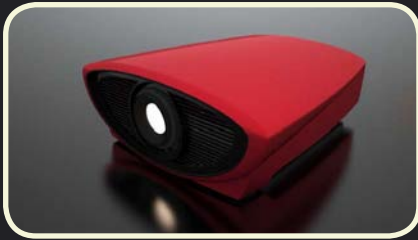
The **Dream'E** combines a daringly distinctive chassis with an uncompromising LCoS technology electronics and some impressive Full-HD specifications.

The new custom-made **full-glass elements** lens delivers a jaw-dropping picture and thanks to the variable **Electronic Lens Aperture**, the **Dream'E** can adapt itself to a wide range of light environments.

The more demanding videophile will be pleased by the new **Color Management System** designed for advanced users and installers. Each primary and secondary colors can be set independently to obtain the desired effect on the projected screen beyond the **DreamVision D65 calibration**. The wide **Gamma** range features a dynamic picture in any circumstances.

### DREAM'E 1080p

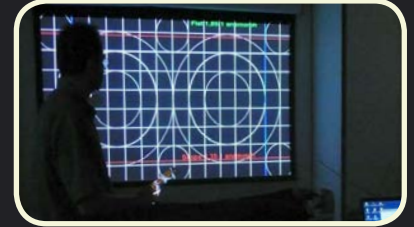
- 3x 0.6" LCOS panels
- Full-HD Resolution 1920x1080 pixels
- 15 000:1 Contrast Ratio with Aperture
- DreamVision D65 Calibration
- Home Automation friendly (RS232)
- Video Compatibility up to 1080p-24 HDTV
- Dedicated Gamma and Color Management
- Full-glass Optical Engine with variable Aperture
- +/- 60% vertical, +/- 30% horizontal Lens shift
- Optical zoom 1.5x (1.75-2.53:1 throw ratio)
- High quality processing, Detail Enhancement
- Integrated THEATRE Mode for 2.35 installs
- Silent working noise (< 20 dB)
- Designed in Paris, France



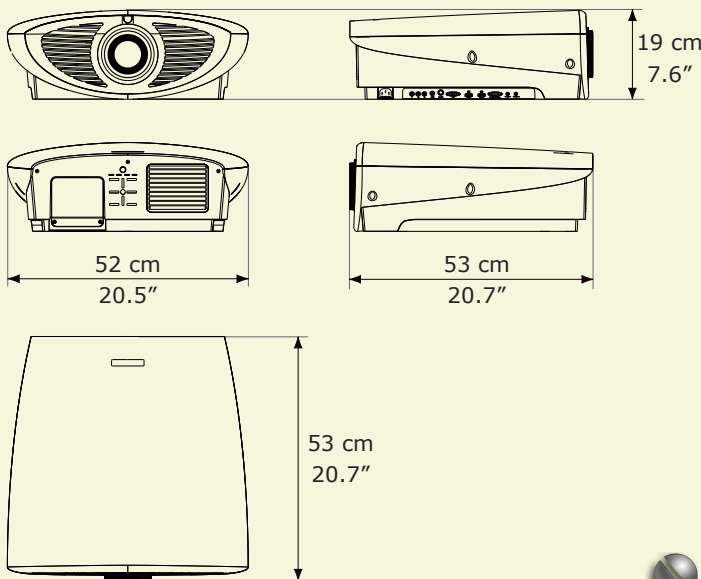
Who else than French Designer **Antoine Béon**, the DreamBee line designer, could better imagine the latest **DreamVision** projector. The contemporary work-of-art looking **Dream'É** projector is available in a rainbow of high-gloss colors to seamlessly integrate your interior decoration.

### Install it in a snap

The input panel is dissimulated on the side of the projector and offers a wide connectivity for an easy install. Thanks to the **1.5x Zoom**, the large vertical, horizontal lens shift seconded with a powerful keystone correction, the **Dream'É** will accommodate the most constraining setups.



### DIMENSIONS

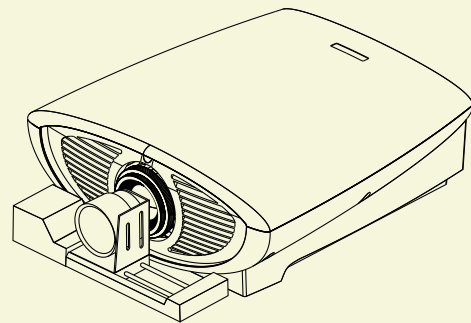


### Optimized Cinemascope® Projection

The true cinema fanatics will definitely praise the **Dream'É** that integrates the awarded **Theatre Mode**, giving full control over the optional DreamVision **2.35 THEATRE System Kit**.

Switch between HDTV and Cinemascope® screens by just using one finger.

### OPTIONAL THEATRE KIT (for Cinemascope® Projection)



SPECIFICATIONS	Description
Panel Technology	3-chip 0.6" LCoS
Resolution	Full-HD (1920x1080)
Screen Size (16:9)	50" - 250" diag.
Contrast	15 000:1
Optics	Ultimate Reference Lens
Throw Ratio	1.75:1 - 2.53:1
Screen Offset	Optical Shift +/- 60% vertically +/- 30% horizontally
Inputs	2x HDMI 1.3 1x Component 1x S-Video 1x Video 1x VGA (S-D15)
RS-232	Yes

SPECIFICATIONS	Description
Video Compatibility	TV: 480i up to 1080p PC: VGA to SXGA
Installer CMS	R,G,B,C,Y,M range and saturation
Installer Gamma	0-100IRE adj. Gamma
Weight	17 Kg
Dimensions (WxDxH)	52 x 53 x 19 cm 20.5" x 20.7" x 7.6"
12V Trigger	Yes (2x)
Video Compatibility	TV: 480i up to 1080p PC: VGA to SXGA
Cine-Motion (1080p24)	Yes