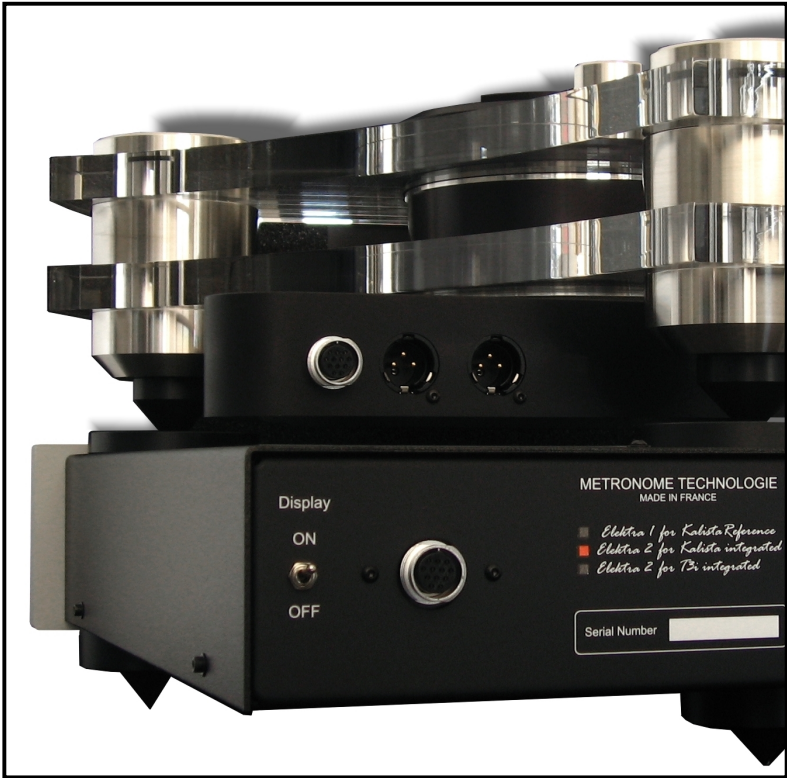
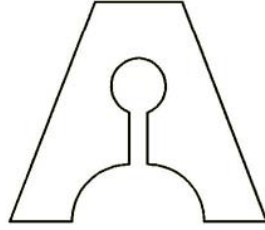


METRONOME TECHNOLOGIE



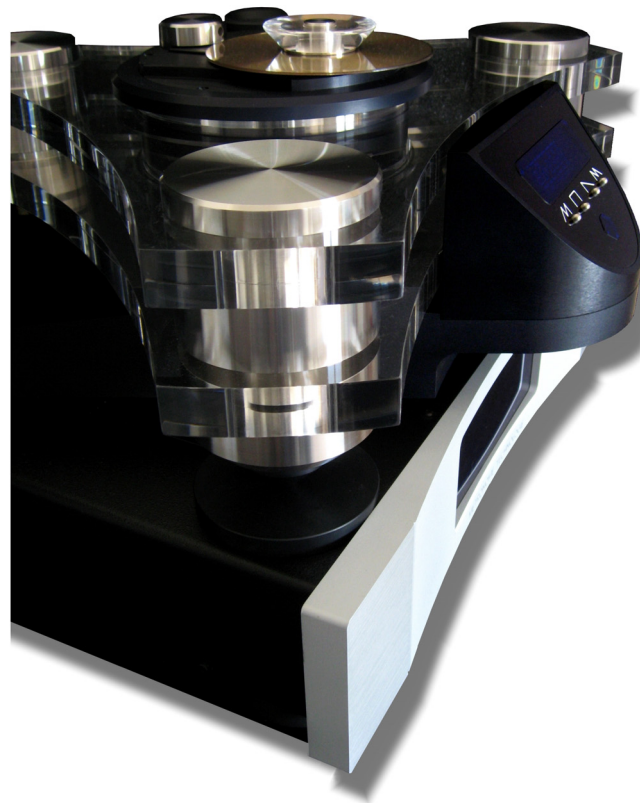


METRONOME TECHNOLOGIE

OWNER'S MANUAL

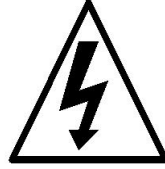
Kalista

Integrated



Warning: Potential Shock Hazard!

This symbol is intended to alert the user of the presence of important operating and maintenance (servicing) instructions in the literature accompanying the appliance



This symbol is intended to alert the user of the presence of uninsulated “dangerous voltage” within the product ‘s enclosure that may be of sufficient magnitude to constitute a risk of electric shock to persons

**TO REDUCE THE RISK OF FIRE OR ELECTRIC SHOCK,
DO NOT EXPOSE THIS APPLIANCE TO RAIN OR MOISTURE**

This product uses high voltage. There are no operator serviceable parts inside. Refer servicing to qualified personnel only. Observe all warnings and instructions marked on the product. Use only a grounded outlet. Do not install or use this product near water or when you are wet. Install the product securely on a stable surface. During operation the vacuum tubes (if any) become hot: do not touch.

Information

Marking by the “CE” mark indicates compliance of this device with the EMC (Electromagnetic Compatibility) and LVD (Low Voltage Directive) directives of the European Community.

Before operating the unit, please read through these manual so you will know how to operate your model properly.

TABLE OF CONTENTS

1 - PREFACE

2 - IMPORTANT SAFETY INSTRUCTIONS

3 - SETTING UP OVERVIEW

3-1 Unpacking

3-2 Positioning

4 - LOCATION & PARTS DESCRIPTION

4-1 High Capacitor Power Supply

4-1-1 Front panel layout

4-1-2 Rear panel layout

4-1-3 New feet & cones

4-2 Kalista Integrated unit

4-2-1 Front panel layout

4-2-2 Rear panel layout

4-3 Remote Layout

5 - OPERATING INSTRUCTIONS

5-1 High Capacitor Power Supply

5-2 Kalista Integrated unit

5-3 Protection

5-4 RC1 Remote Control

5-5 Cleaning

6 - SPECIFICATIONS

6-1 Product overview

6-2 Technical data

7 - WARRANTY

CERTIFICATE OF AUTHENTICITY

1 – PREFACE

Congratulations

You have just acquired the finest component to deliver the best sound for the playback of CD audio and musical reproduction. The Top Loaded Kalista CD Integrated is made from material selected for the ability to deliver the best sound.

This innovative design is an aesthetic way to extract digital information for the best sound from CD media.

The Kalista Integrated is the result of many months of technical research, testing and countless hours of listening.

Company profile

METRONOME TECHNOLOGIE is a French company founded in 1987 by Dominique Giner. They have developed over the years a wide range of High End products. The making of all METRONOME TECHNOLOGIE models comply with two main objectives:

1. Aesthetically pleasing with a high level of quality inside and outside the box.
2. The best possible sound in line with this price range.

Each unit is delivered with vibration draining cone points, fitting 3 Delrin® feet to increase stability and vibrations control. Great care is taken in power supplies engineering and in details which really matter. The compact line is optimized to ensure best mechanical rigidity while working with any décor, assuring a lasting satisfaction in your investment.

2 – IMPORTANT SAFETY INSTRUCTIONS

1. ALWAYS disconnect your entire system from the AC mains before connecting or disconnecting any cables, or when cleaning any component.
2. A three-conductor AC mains power cord which includes an earth ground connection must be used. To prevent shock hazard, all three connections must ALWAYS be used.
3. Original AC main power cord is recommended for use with this product.
4. NEVER use flammable or combustible chemicals for cleaning.
5. NEVER operate this product with removed cover.
6. NEVER wet the inside of this product with any kind of liquid.
7. NEVER pour or spill liquids directly onto this unit.
8. NEVER block air flow through ventilation slots or heat-sinks.
9. NEVER bypass any fuse.
10. NEVER replace any fuse with a value or type other than those specified.
11. NEVER attempt to repair this product: contact your retailer.
12. NEVER expose this product to extremely high or low temperatures.
13. ALWAYS unplug sensitive electronic equipment during lightning storms.

3 – SETTING UP OVERVIEW

3-1 Unpacking

The Kalista Integrated has been packed in two boxes specially designed containing:

1. Kalista integrated unit :
Small case with Accessories
 - x 1 Black metal Remote Control RC1 with 2 batteries LR03 type
 - x 1 Delrin® CD clamp,
 - x 1 Key to dismount the remote control to change the batteries,
 - x 3 Delrin® discs for kalista's feet.

2. High Capacitor Power Supply:
 - x 1 Power cord,
 - x 1 12 wires cord between Kalista and Elektra 2 Power Supply.

Carefully unpack the units: take care that you may need the help of a second person to lift it. Carefully preserve packages and protections. They will be useful to properly pack the unit any time shipment is needed. It is the best protection to preserve the unit from damage or delay. Please note that the warranty will be considered as cancelled if the dispatched units are packed incorrectly.

3-2 Positioning

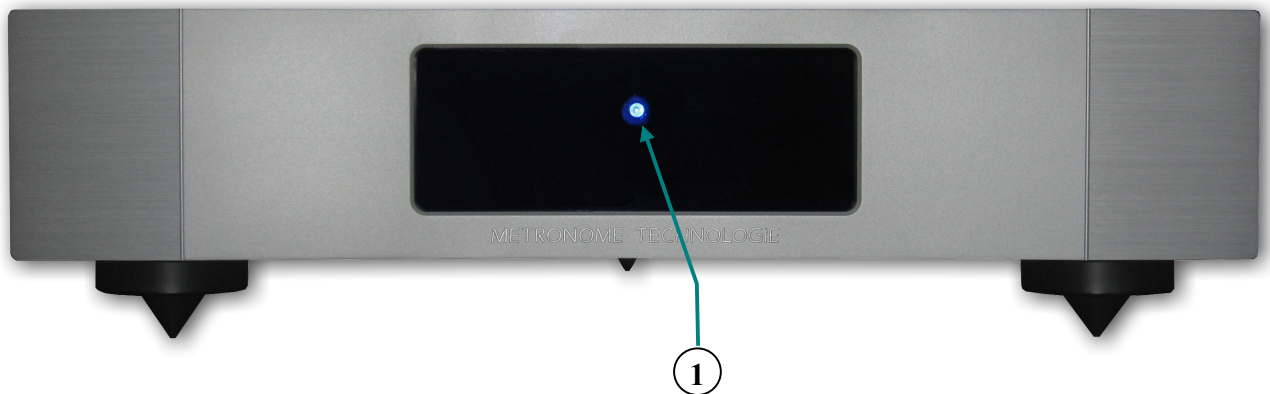
Set down the Kalista Integrated on a solid support. Do not put it straight down a carpet or any flammable material. Connect the Kalista to its power supply and be sure to turn off the power of all components before making connections and connect securely to prevent noise.

Connect the power cable to the wall outlet.

4 – LOCATION & PARTS DESCRIPTION

4-1 High Capacitor power supply

4-1-1 Front Panel Layout:



- ① Blue Led: Immediately after activated the main current with the switch on the rear face of power supply, this led will blinks during approximately 15 seconds.

Due to high capacity (0,7 Farad), the power supply takes some seconds to obtain values desired.

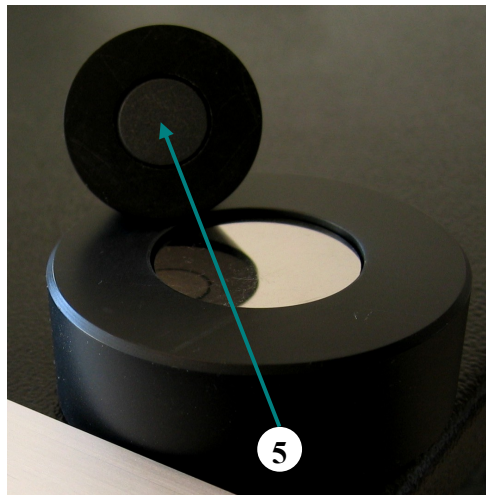
Once the capacitors and voltages come with nominal values, the led will be continuous alight and your kalista will be started.

4-1-2 Rear Panel Layout:



- ② Display switch: * up : Kalista's display is ON, * Down : Kalista's display is OFF.
- ③ Power Supply Connector: To connect the Elektra 2 power supply to the KALISTA CD Integrated (12 wires cable).
- ④ Power entry connector to plug the power, fuse compartment change fuses if broken, and switch "on / off" the power supply.

4-1-3 Feet & cones:

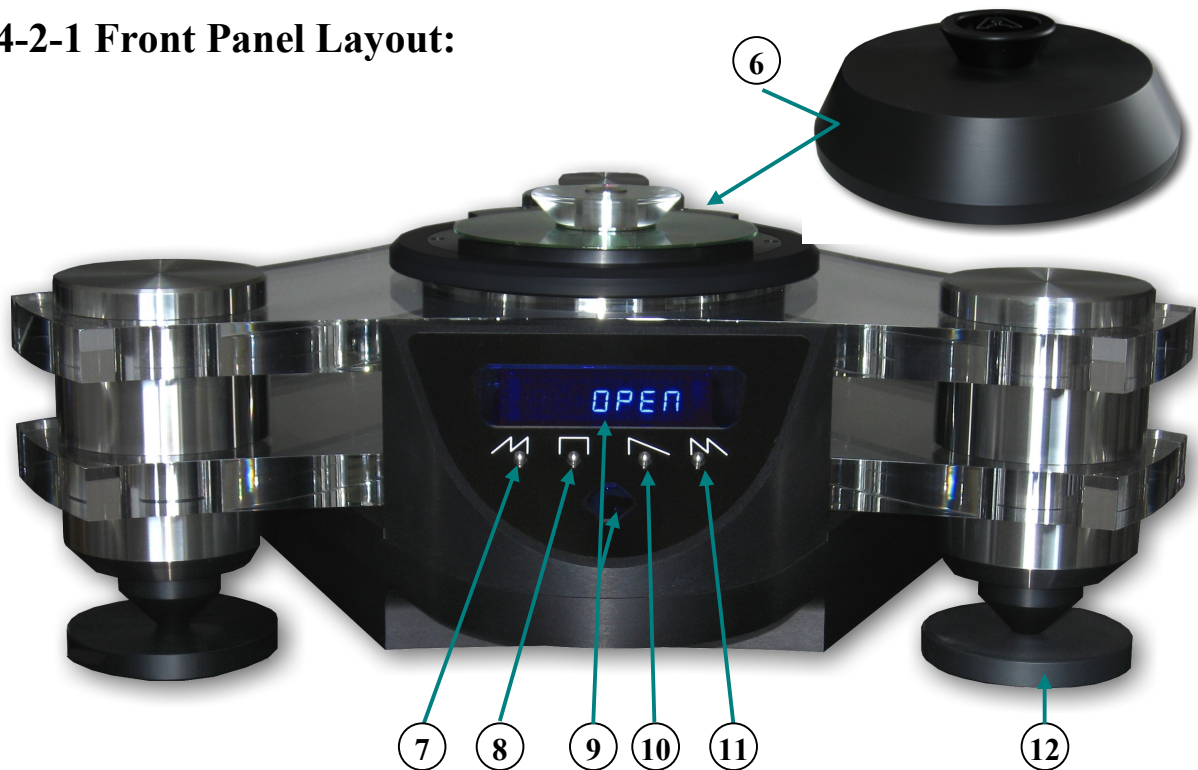


- ⑤ **Magnet:** This magnet keeps the cone fixed under the foot



4-2 Kalista CD Integrated unit

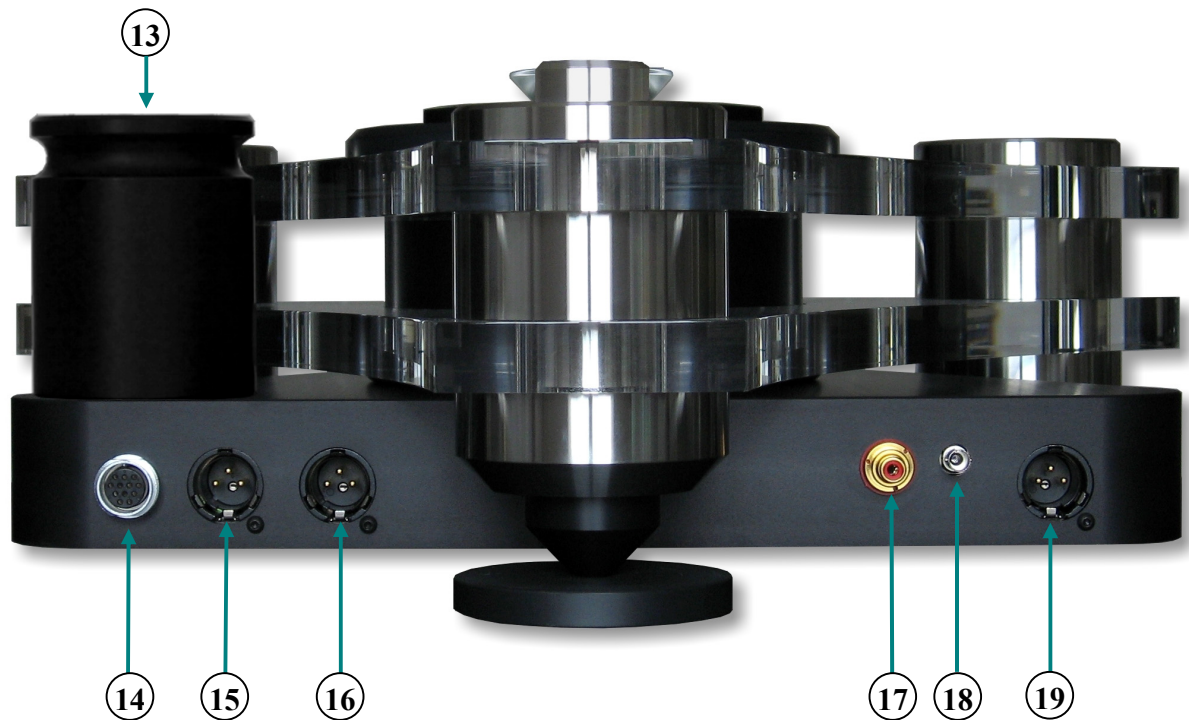
4-2-1 Front Panel Layout:



- ⑥ Helmet: It's absolutely necessary to protect the Philips CDM12 Pro mechanical.
- ⑦ Previous track: To select the previous track on the cd.
- ⑧ Stop: To stop the reading of cd.
- ⑨ Display & IR : To show various information like the number of the track in the course of reading, its state of advance of reading, the repeat functions (1 or all) and pauses ; Infrared Receptor for remote control
- ⑩ Play: To start the reading of cd.
- ⑪ Next track: To select the next track on the cd.
- ⑫ DELRIN[®] discs for feet.

WARNING: DO NOT APPLY THE CLAMP WHEN NO CD IS PRESENT AND DO NOT PUT IN THE SAME TIME CLAMP & HELMET.

4-2-2 Rear Panel Layout :



- ⑬ Clamp holder: You MUST use it to put the clamp when the casket is present.
- ⑭ Power Supply connector: To connect the Elektra 2 power supply with the KALISTA CD Integrated (12 wires cable).
- ⑮ XLR RIGHT: BALANCED Right for analog signal output.
- ⑯ XLR LEFT: BALANCED Left for analog signal output.
- ⑰ RCA S/PDIF: S/PDIF digital output *
- ⑱ OPTICAL: OPTICAL digital output *
- ⑲ AES/EBU: AES/EBU digital output *

* Note: all outputs marked by a star need to go to an external converter

4-3 Remote Control Layout

This remote can operate all the CD drives, pre-amplifiers and integrated amplifiers of the METRONOME TECHNOLOGIE products.

IR Transmitter



Remote control RC1

To activate **CD mode** press on [CD] key, the remote locks on the CD mode. The available functions are:

Direct access to the disk tracks by pressing on [1] to [0] keys.

PLAY TRACK function by pressing on the key: >

NEXT TRACK function by pressing on key: >>

PREVIOUS TRACK function by pressing on key: <<

PAUSE function by pressing on key: ||

STOP function by pressing on key: □

REPEAT function by pressing on key [REPEAT]: Pressing this key once time, the drive will play the disk indefinitely. Pressing a second time the key, the drive will play the current track indefinitely; and by pressing one more time, the drive will operate on normal play mode.

OPEN function by pressing on key [OPEN], the tray will open. This function is available on electric tray drives only.

STANDBY function by pressing on key [STANDBY], the drive will enter on standby mode. If you have to keep the drive for a long time without use, it is better to switch off the machine with the main switch.

To activate **AMP mode**, press on [AMP] key. The remote locks on AMP mode. The available functions are:

Direct selection of inputs of pre-amplifier or integrated amplifier by pressing on key [1] to [9]. Number of inputs depends on models.

MUTE function by pressing on key [MUTE]: this function will put the output level at 0dB. Another press will activate the initial output level.

VOLUME - function by pressing on key [VOLUME -]: this function will decrease the output level.

VOLUME + function by pressing on key [VOLUME +]: this function will increase output level.

STANDBY function by pressing on key [STANDBY], the pre-amplifier or integrated amplifier will enter on standby mode. If you have to keep the drive for a long time without use, it is better to switch off the machine with the main switch.

5 - OPERATING INSTRUCTIONS

Before turning on the Kalista Integrated, be sure that all precautions and warnings have been carefully reviewed and complied with.

5-1 High Capacitor Power Supply (0,7 Farad).

Please check to have connected the 12 wires cord between the power supply and the kalista.

Once started the power supply by using the switch on the rear panel, the kalista don't light on immediately, due to high capacitors included inside the power supply. It takes minimum 15 seconds of delay before that the kalista will be activated. During these some seconds the blue led in front panel is blinking.

These 15 seconds ended, the blue led will be continuous alight and the kalista's display alights. Enjoy...

5-2 Kalista CD Integrated unit

Audio CD initialization :

To initialize Table Of Contents of your audio CD, you have just to put the Perplex clamp on the CD and to wait 5 seconds.

In fact, the Kalista integrated uses an optical detector to check CD availability.

5-3 Protection

The unit is equipped with special protection circuitry to provide maximum performance with greatest reliability. It is protected by internal electronic circuits and by a general fuse situated in the block near the power cord, beside the power switch. To change the fuse, it is imperative to first unplug the power cable, then open the fuse compartment (see photo on Rear Panel Layout) with a screwdriver and replace the fuse by an identical slow blowing model. The machine is delivered with a second fuse. Note: after a long period without functioning, the fuse may burn out when the power supply is switched on, since there is a very important current consumption lasting a brief instant when the power supply is completely discharged.

5-4 RC1 Remote Control

For a correct function of the remote, we recommend a 40° max angle of incidence with the receptor. The RC1 remote control will operate with 2 batteries LR03 type size AAA. For changing the batteries, unscrew the 3 screws on the back side (key is provided), replace the batteries. Remount the back side. In normal use, capacity of the batteries is a few months. Warning: don't leave used batteries in the remote, they could damage the circuit.

5-5 Cleaning

For cleaning, please use a soft and non abrasive cloth. Never use any solvent or chemical product: only use a window-pane cleaning product.

6 - SPECIFICATIONS

6-1 Product overview

High Capacitor Power Supply (with 0,7 Farad) :

This separated Elektra 2 Power Supply allows removing most of the EMI/RFI pollution coming from the power supply by using a special AC filter especially designed for Metronome Technologie High End products. A new barrier had been passed by the use of independent regulations for each stage; make a total isolation between the KALISTA and the rest of the system. This permits to isolate mechanically the sensitive electronics components like crystal oscillator from the vibrations induced by the transformers. Also by the use of totally separated regulations for the different stages (display, servo control, motor, digital & analog output stage) the level of noise and capability of silence reproduction are increased by a wide margin.

The display could also be put OFF by a selector on the power supply rear panel: all electrical noise coming from the display is removed and the sound is again one step better.

Integrated Module:

Top loaded CD integrated based on the Philips CDM12 PRO drive for the laser, servo and control functions. Proprietary modifications are made to the Philips mechanism to suit the Metronome specifications.

Clamp and shaft, specially designed are used to maintain for the best the CD in place. Both the use of a special stainless steel and a Perspex clamp made of Delrin permit to reproduce the best sound possible with low jitter since the reading is at the pit level.

"Continuous Ground" link from the disc surface to the electrical earth: lower level of CD static charges and better working condition for the reading electronic.

Lighting of the CD surface and thickness for better information extraction: the light come inside of the disk through the transparent Perspex clamp. A specially designed black "helmet" protects the reading mechanism when the unit is not in use.

The analog stage is made around 4 operational amplifiers chosen between 30 models, for the music quality ,fast transitions and analog sound.

6-2 Technical data

- **PICKUP MECHANISM:**

- CDPRO 2 V6.8

- **DIGITAL OUTPUTS: 3 outputs (44,1 KHz)**

- 1 ATT/ST : Glass fiber optic this link allows a total electric isolation between the drive and the converter.
 - 1 RCA S/PDIF: 75 ohms
 - 1 AES/EBU: 110 ohms

- **DIGITAL OUTPUTS: 2 outputs**

- 2 Analog output: 2.5 V RMS @ 0 dB - 600 Ohms -Connector XLR

- **0.7 FARAD POWER SUPPLY:**

- Voltage: 100 VAC +/- 10% - 50/60 Hz - Japan
 - Voltage: 120 / 240 VAC +/- 10% - 50/60 Hz – Other countries
 - Consumption: 80 VA Max

- **CASKETS:**

- Kalista i dimensions: W x L x H: 630 x 640 x 340 (mm)

- Elektra 2 power supply dimensions: W x L x H: 610 x 590 x 270 (mm)

- Weight Kalista Integrated: 25 Kg / 55 lbs

- Weight Elektra 2: 20 Kg / 45 lbs

7 - WARRANTY

METRONOME TECHNOLOGIE products are warranted to be free of defects if used under normal conditions for a period of one (1) year from the date of purchase.

Conditions

This warranty is subject to the following conditions and limitations. The warranty is void and inapplicable if the product has been used or handled other than in accordance with the instructions in the owner's manual, abused or misused, damaged by accident or neglect or in being transported, or if the defect is due to the product being repaired or tampered with or modified by anyone other than METRONOME TECHNOLOGIE or an authorized repair center, or in case of removal, defacing or falsifying of the serial numbers.

Remedy

In each country the Importer has accepted the responsibility for product warranty. In the unlikely event that the product requires service, warranty service should normally be obtained from the importing dealer or distributor from which you purchased your unit. A return authorization prior to shipment must be obtained for any warranty requirements. The product must be packed and returned to the address given with the return authorization.

Miscellaneous

Any implied warranties relating to the above product shall be limited to the duration of this warranty. The warranty does not extend to any incidental or consequential costs or damages to the purchaser.

Certificate of authenticity

We hereby certify that your

METRONOME TECHNOLOGIE

Model: Kalista Integrated

*has been produced in our factory located in
France.*

*Every possible quality control measure was
taken to ensure that your have acquired the
most perfect and reliable product.*

Dominique GINER