




MARTIN LOGAN®

d e s i g n s e r i e s



Delivering Ultimate Performance

From the moment we turned on our first prototype ESL transducer, we've strived for excellence in everything we do. At MartinLogan, you will find our in-house engineering and industrial design team custom specifying or designing each individual component—assuring that every detail, no matter how small, goes far beyond the world of traditional loudspeaker design. We wrap ultimate performance and technology in uncompromised design—creating truly unique products worthy of the MartinLogan name. We constantly strive for excellence; not only in engineering and design, but also in how we interact with one another—from those of us within MartinLogan, and our handpicked and trained dealer network to you, our worldwide family of customers.

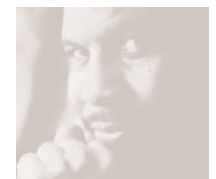
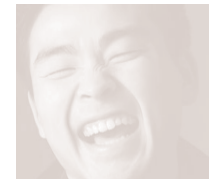
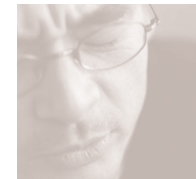
Our award-winning, in-house design team, combining over a century of collective industry experience, visualizes the future surface-by-surface, perpetually committed to testing and retesting materials, aesthetics and construction techniques to discover the ideal solutions for each unique MartinLogan product. Our world-class engineering team design and innovate new solutions and analyze countless crossover, circuit and driver topologies to assure that each MartinLogan product reveals every nuance and detail of recorded sound.

Every high-performance MartinLogan product is manufactured to exacting tolerances with constant diligence towards exceeding your

every expectation. This commitment permeates our entire manufacturing team from purchasing and quality assurance to the coatings and shipping departments—each member totally committed to contributing their heart and soul time and time again.

Rigorous quality testing of each MartinLogan transducer assures levels of performance beyond any other technology. Specially designed, proprietary woofers deliver bass with accuracy and authority. MartinLogan's audiophile grade, crossover components preserve the original audio signal, assuring that every product delivers ultimate performance.

Commitment doesn't end at the shipping dock. Our service department—with an intimate knowledge of each transistor, transducer, wire, nut, and bolt in every product manufactured during the last twenty years—provides world-class troubleshooting and resolution to any anomaly that may occur. They often bring life back to speakers damaged by lightning, earthquakes and hurricanes (and have faced challenges as extreme as restoring cherished speakers that were found floating in a swimming pool after a wild party)! When you buy MartinLogan you buy a culture that strives to deliver excellence and ultimate commitment on every level.





Clarity



After 20 years committed to developing the world's most advanced and sophisticated loudspeakers, we knew our challenge was to build as much of that quality and performance as possible into a speaker that could be enjoyed by a wider audience. It had to be pleasing to the eye as well as the ear, easy to install, and smaller and less expensive than our previous speakers. Yet it had to have the MartinLogan sound.

It's the kind of project that goes to the heart of the engineering process – and that drives innovation. Clarity inspired the development of our advanced CLS™ Generation 2 electrostatic transducer with dipole sound radiation, MicroPerf™ stators, and ClearSpar™ supports for superior performance from a small panel. Our design team also created NAC™ (Natural Ambience Compensation) technology, making it easier to enjoy full-spectrum sound throughout the listening area.

Even the cabinet is a radical departure, constructed of sonically welded constrained-layer laminates. Lightweight yet extremely rigid, it allows graceful, flowing lines in real wood materials. Clarity is available in two handsome color palettes to enhance its appearance in any room.



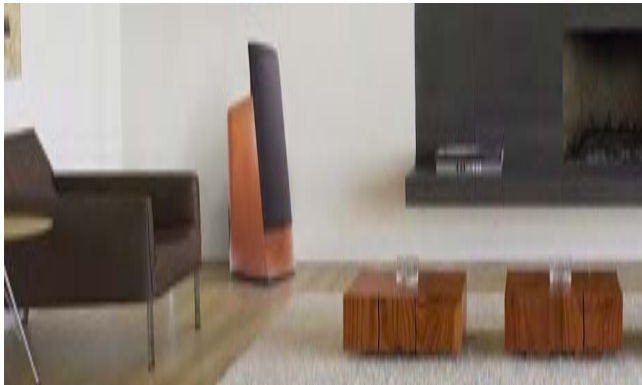
Montage



Montage builds on the technology behind the groundbreaking Mosaic to deliver classic MartinLogan sound at an even more affordable price. Key to both is our new ATF™ (Advanced Thin Film) dipole driver. Superior in almost every way to conventional moving-coil transducers (cones and domes) – and very similar in most respects to the electrostatics that we’ve always favored – ATF drivers project a wonderfully detailed and three-dimensional sound field. Our proprietary Vojtko™ crossover topology marries the ATF drivers to a pair high-resolution 6.5-inch aluminum-cone woofer, whose quick, precise bass provides the speaker’s sonic foundation.

Fully compatible with all audio/video equipment, Montage excels in almost any application, whether as a stereo pair in a music system or as front or surround speakers in a home theater setup. Made entirely of wood, the cabinet borrows the sonically welded, constrained-layer construction of Clarity and Mosaic to express a fluid, modern visual style.

Mosaic



Recent strides in magnetic thin-film technology led to the development of Mosaic's remarkable mid- and high-frequency drivers. These new Advanced Thin Film transducers are superior in almost every respect to conventional moving-coil drivers – very similar in many operational and performance characteristics to the electrostatics that we've always favored. This is particularly apparent in the rare combination of pinpoint stereo imaging within a deep, three-dimensional sound field that only dipole electrostatic and ATF™ drivers seem capable of achieving. ATF drivers can be smaller than electrostatic panels, however, and they are less difficult and expensive to manufacture.

Our proprietary Vojtko™ crossover topology marries the ATF drivers to a high-resolution 8-inch aluminum-cone woofer, whose precise, authoritative bass rounds out the sonic package. The physical package is something special as well. Made entirely of wood, the cabinet borrows the sonically welded, constrained-layer construction first used for Clarity to express beautifully flowing lines.







Fresco



An engineering masterpiece, Fresco merges innovative design, advanced materials, and the latest technologies to produce wide-range, MartinLogan sound from an astonishingly compact and versatile package. ATF™ (Advanced Thin Film) midrange and high-frequency drivers, a precision Vojtko™ crossover, and dual long-excursion, low-mass woofers combine to supply the performance. Let appearances not deceive – this is not some wimpy wall-mount speaker. Whether used as a front, center, or surround speaker, Fresco delivers electro-static-like smoothness, precision, and detail, with firm, agile bass and impressive dynamics.

Fresco's gas-assist molded, super-dense, low-mass cabinet is just 6 inches deep, blending perfectly with wall-mounted flat-panel displays. Its sweeping lines and vivid textures complement any décor, from traditional to modern. Easily interchangeable faceplate and grille options provide tremendous flexibility in tailoring the speaker's appearance. The faceplate can be painted to match any interior or a user may construct an entirely new faceplate from nearly any material. Each Fresco comes standard with a low-profile, single-pivot wall bracket that allows vertical or horizontal mounting next to a plasma or LCD display or in any other location.

Optionally available are a table stand and a floor stand.

Vignette

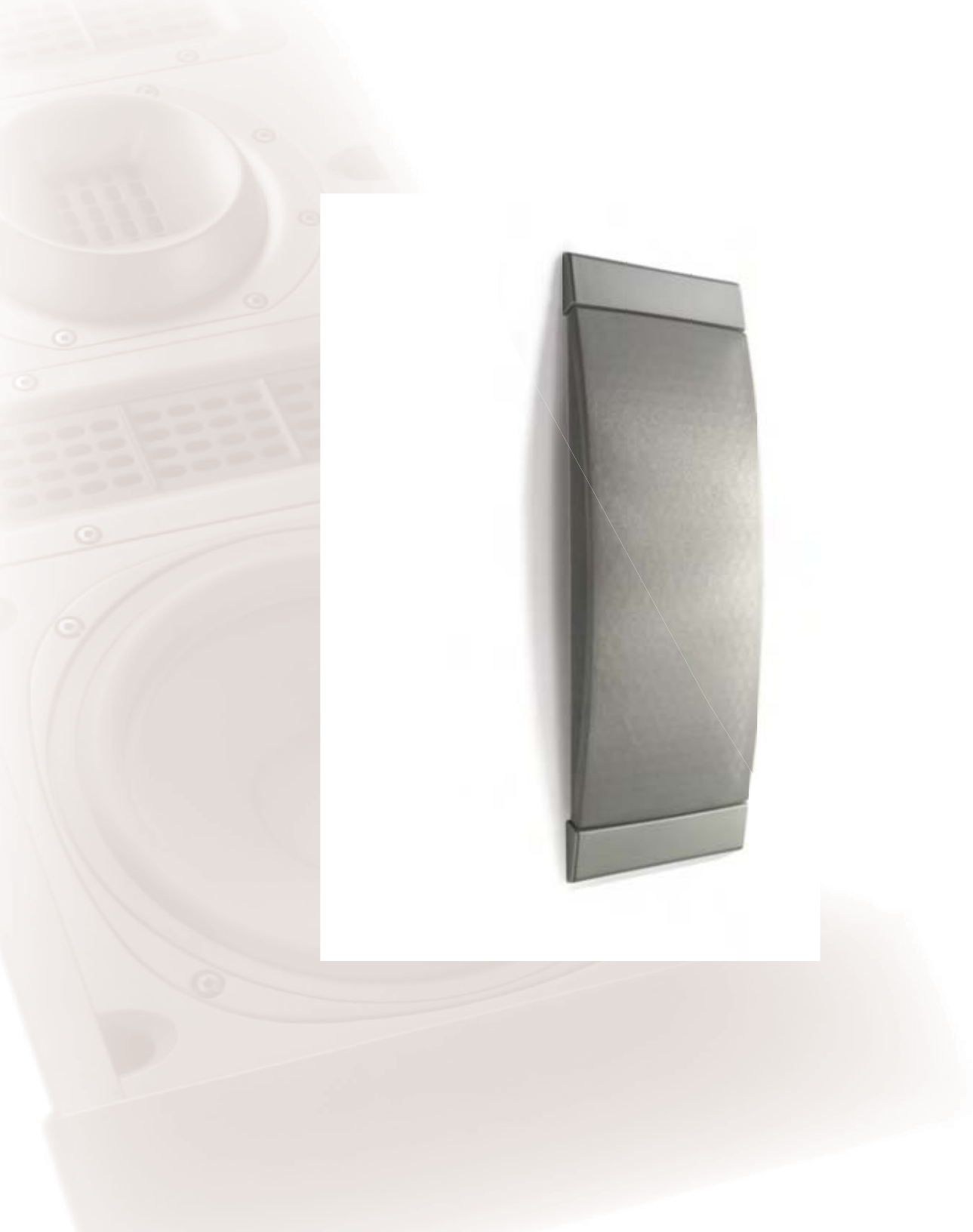


Descended from the revolutionary Fresco, Vignette incorporates the same long-excursion aluminum-cone woofer engineering, massive high-grade crossover components, and sophisticated Vojtko™ filtering used throughout MartinLogan's reference line. These features, together with ATF™ (Advanced Thin Film) technology for the high-frequency driver and a proprietary super-dense, low-mass cabinet deliver performance seldom encountered at even twice the price.

When using the optional floor or table-stands, like the Fresco, Vignette demonstrates amazing performance capabilities in dedicated 2-channel plus sub audiophile systems. Used as an on-wall main, center or effects channel in a high-performance home theater, Vignette is equally at home in either horizontal or vertical orientations using the standard wall bracket. Vignette comes standard with both silver and black grille covers.

Optionally available are a table stand and a floor stand.





Passage



The versatile, affordable Passage delivers outstanding performance more akin to that of floorstanding speakers than in-walls. Its Advanced Thin Film tweeter, long-excursion, low-mass woofers, and state-of-the-art Vojtko™ crossover combine to produce clean, powerful bass, scintillating detail, and pinpoint imaging within a richly ambient sound field.

Passage's aluminum chassis and 1-inch-thick MDF (medium-density fiberboard) front baffle are so rigid that they actually stiffen the wall in which the speaker is installed, minimizing acoustically destructive vibrations. The benefit is very apparent in Passage's taut, extended low-frequency reproduction.

Tweeter-alignment sphere technology allows up to 20° pan and tilt and up to 90° rotation, for incredible adaptability in any location or environment. Paintable end caps and a selection of grille colors allow perfect matching with any décor.

Ticket



Although very compact and affordable, Ticket is an excellent performer. The secret? It's all in the engineering: twin high-resolution aluminum-cone woofers, an integrated dome tweeter with a high-intensity neodymium magnet, an advanced-technology Vojtko™ crossover, and a rigid aluminum chassis and front baffle. The result is a wonderfully smooth, clear, and engaging sound with a clean, tight bass foundation. The speaker installs quickly and securely, using the same constant-control mounting-lock system as the Passage. The Ticket also features paintable end caps and a selection of grille colors for perfect matching with any decor.





Abyss



Down-Firing Configuration

Front-Firing Configuration

Abyss makes it easy to add great bass to your home's audio system. Abyss' compact, sealed cabinet houses some serious performance-enhancing technology, starting with a high-resolution 12-inch aluminum cone woofer. A perfectly matched, advanced-design amplifier and IME (Inverse Mathematical Equalization) filtering extract from the driver the greatest possible low-frequency extension and power with a flat response and absolute minimum distortion.

It's amazing to hear deep bass so clear and detailed emerge with so much impact from such a small enclosure. Even more amazing is that Abyss produces extremely articulate bass without need of exaggerated amplifier power ratings or transient-blurring 'more boom for your buck' ported or passive radiator enclosures common to so many subwoofers.

Performance aside, the real story is Abyss' innovative user-configurable design. Capable of both front- and down-firing operation and featuring flexible crossover controls Abyss is capable of providing superb bass from any location – whether in a corner, under or behind furniture, or even installed in a cabinet. Abyss' robust connection and control system allows simultaneous connection of both 2-channel stereo music and multi-channel (.1) home theater—and allows each source to have unique crossover and level settings, guaranteeing a perfect performance in every application!

Dynamo



Dynamo employs the full array of MartinLogan driver, amplifier, cabinet, control, and systems technologies to achieve deep, rich, satisfying bass in a subwoofer of compact dimensions and moderate price. Look inside and you will find each critical element painstakingly designed and manufactured to the same high standards applied to our flagship subwoofers. A sealed chamber cabinet design, IME (Inverse Mathematical Equalization) filtering and a perfectly matched high-quality amplifier drive Dynamo's precision woofer to maximum excursions while maintaining exceptional linearity and low end detail. Better yet, all of this is done without relying on over inflated specs or detail-robbing ports or passive radiators found in many subwoofers.

Dynamo is user-configurable for either front- or down-firing operation. That capability together with flexible crossover controls ensures that Dynamo can deliver excellent bass from any location in your room. Dynamo's robust connection and control system allows simultaneous connection of both 2-channel stereo music and multi-channel (.1) home theater—and allows each source to have unique crossover and level settings, guaranteeing a perfect performance in every application! No other subwoofer in its class offers Dynamo's combination of bass extension, power, and detail.



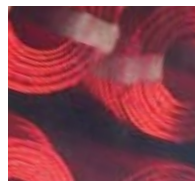
Down-Firing
Configuration

Front-Firing
Configuration

Ultimate Technology for Your Eyes & Ears

MartinLogan innovation delivers extraordinary performance and sound for any lifestyle. From electrostatic and ATF™ (Advanced Thin Film) speakers to take-no-prisoners subwoofers, our unique engineering brings new levels of performance to sound reproduction and enhances any stereo music or home theater system while complementing any room—allowing you to enjoy a rich musical and cinematic experience at an unrivaled price.

We craft rich textures in wood, fabric, polymers, and metals as carefully as we engineer each transducer and electronic element. You see dramatic sweeps of lush wood, transparent panels reflecting light and shadow, and contoured textiles framed in black and silver—utterly distinctive and absolutely unique design and technology for your lifestyle.



Technology Glossary

For additional details regarding MartinLogan technology, please contact your local Design Series dealer or visit www.martinlogan.com.

ATF™

Based on RADIA planar technology, high-resolution ATF drivers approach the clarity and detail of our electrostatic panels while permitting the use of a compact cabinet. Each MartinLogan ATF transducer has a micro-thin, low-mass diaphragm with an ultra-light, etched aluminum conductive surface, suspended between two opposite-polarity, high-field-strength neodymium magnet arrays. When the electrical audio signal from an amplifier passes through the diaphragm's surface, it creates an alternating electromagnetic field that interacts with the fields of the fixed magnet arrays, forcing the diaphragm back and forth to produce sound waves in the air. The strength and polarity of the diaphragm's field varies according to the audio signal.

Dipole Sound Radiation

Dipole sound radiation is the ability to simultaneously transmit acoustic energy from both the front and back of a transducer. Electrostatic panels and ATF™ transducers (as found in Mosaic and Montage) are heralded for their near-ideal radiation patterns. They send very little sound to the sides, thereby minimizing side-wall reflections with short arrival times that tend to interfere with perception of the direct sound. Their strong rear radiation, however, produces a generous amount of ambience-

enriching later-arriving reflections off the wall behind them.

ESL

Electrostatic (ESL) transducer technology, the most accurate loudspeaker technology on the planet, provides detailed, high-resolution sound with linearity, transparency, and openness beyond any other technology. A transparent, ultra-responsive, gossamer thin-film diaphragm is suspended between spacing spars and two insulated, perforated, high-voltage carbon steel stators. When the audio signal from your amplifier is applied to the oppositely charged stators the alternating polarity causes electrostatic energy to simultaneously push and pull the diaphragm. The resulting movement produces the signature MartinLogan sound that has captivated audio enthusiasts for more than twenty years.

ETC™ Spikes

Engineered to couple your speaker directly to the floor, ETC (Energy Transfer Coupler) spikes minimize lost energy and allow tighter, better defined bass, cleaner, more dynamic highs, and improved imaging and focus.

IME (Inverse Mathematical Equalization)

An IME (inverse mathematical equalization) filter is derived from the inverse of the unfiltered driver response. Precision IME filtering yields extremely accurate low-frequency response – far superior to that provided by the simple

second-order, high-Q filters typical of many subwoofers.

MicroPerf

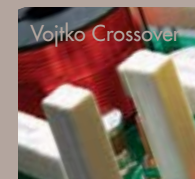
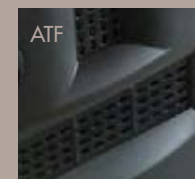
MartinLogan's MicroPerf design optimizes the size of the individual holes in an ESL stator, almost doubling the effective diaphragm radiating area without compromising structural integrity. The resulting increase in output capability and efficiency allows a panel to enjoy a substantial leap in bandwidth and dynamics without growing larger and without sacrificing performance.

NAC™







NAC (Natural Ambience Compensation) increases the amount of reflected high-frequency energy in the room, which can be particularly useful for broadening the coverage area of a small electrostatic speaker in a home theater system with a large seating area. The NAC driver, a superb 1-inch soft-dome tweeter, operates in parallel with the main drivers and can be switched on or off according to listener preference.

Vojtko™ Crossover

Carefully built using only the finest, carefully selected, high-quality components, Vojtko crossovers achieve seamless driver integration and maximum power handling capabilities. Not relying on any one common topology, but instead starting with a clean slate for every product, Vojtko crossovers are optimized for each driver in a specific system, carefully sculpting crossover



	Category	Drive Components/Configuration			Frequency Response (Hz)	Dispersion		Crossover Frequency (Hz)	Sensitivity (2.83 volts/meter)	Impedance (Ohms)
		High-Frequency	Midrange	Bass		Vertical (line source)	Horizontal			
CLARITY	Front/Surround	ESL, NAC Silk Dome		8"(20.3cm) Aluminum/Bass Reflex	46–22,000 (±3dB)	26"(66.0cm)	30°	450	89dB	6, 1.1@20kHz
MOSAIC	Front/Surround	ATF	ATF	8"(20.3cm) Aluminum/Bass Reflex	46–20,000 (±3dB)	–	–	450, 3000	90dB	5
MONTAGE	Front/Surround	ATF		2x6.5"(16.5cm) Aluminum/Bass Reflex	47–20,000 (±3dB)	–	–	2500	90 dB	5
FRESCO	Front/Surround/Center	ATF	ATF	2x4"(10.2cm) Aluminum/Bass Reflex	75–20,000 (±3dB)	–	–	500, 3200	90dB	5
VIGNETTE	Front/Surround/Center	ATF		2x4"(10.2cm) Aluminum/Bass Reflex	78–20,000 (±3dB)	–	–	2200	89dB	6
PASSAGE	Front/Surround/Center	ATF		2x6.5"(16.5cm) Aluminum	45–20,000 (±3dB)	–	–	2200	90dB	6
TICKET	Front/Surround/Center	1" (2.54cm) Soft Dome	2x4"(16.5cm) Aluminum		75–20,000 (±3dB)	–	–	2900	88dB	8
	Drive Components/Configuration			Frequency Response (Hz)	Filters (Hz)		Phase Settings	Input Impedance (Ohms)		
	Bass				High-Pass	Low-Pass				
ABYSS	Subwoofer	12" (30.5cm) Aluminum			23–120 (±3dB)	70	30–80	0°,90°,180°	20,000/34,000	
DYNAMO	Subwoofer	10"(25.4cm) Aluminum			25–120 (±3dB)	70	30–80	0°,90°,180°	20,000/34,000	

	CLARITY Stereo/Theater Front/Surround	MOSAIC Stereo/Theater Front/Surround	MONTAGE Stereo/Theater Front/Surround	FRESCO Stereo/Theater Front/Surround/Center On/Off-Wall	VIGNETTE Stereo/Theater Front/Surround/Center On/Off-Wall
Dimensions (without spikes, per channel)				 	 
Height	53" 134.6 cm	40" 101.6 cm	38" 96.5 cm	8.3" 21 cm	7.2" 18.3 cm
Width	10.2" 25.9 cm	9.5" 24.1 cm	9.5" 24.1 cm	24" 61 cm	19.5" 49.5 cm
Depth	12.3" 31.1 cm	11.7" 29.7 cm	11.7" 29.7 cm	5.7" 14.5 cm	5.3" 14.5 cm
Weight (per channel)	31 lbs 14.1 kg	30 lbs 13.6 kg	30 lbs 13.6 kg	16 lbs 7.3 kg	14 lbs 6.4 kg

Max Power (Watts)	Signal Connection	Low-Voltage	Magnetic Shielding	Included Accessories	Optional Accessories	Cabinet/Trim Options
200	Single-Wire	Y	N	1/4"x20 , Mini ETC Spikes	–	Nw Bs
175	Single-Wire	–	N	1/4"x20, Mini ETC Spikes	–	Na Bo
150	Single-Wire	–	N	1/4"x20, Mini ETC Spikes	–	Na Bo
150	Single-Wire	–	Y	Wall Bracket, On-wall/Off-wall Switch	Floor & Table Stand	Sb Sv Bb Bv Cu
125	Single-Wire	–	Y	Wall Bracket, Both Grille Cover Colors Included	Floor & Table Stand	SBg
150	Single-Wire	–	N	Detailed Installation Template	Grille Cloth & End Cap Color Kits	Bl Si Wt
150	Single-Wire	–	N	Detailed Installation Template	Grille Cloth & End Cap Color Kits	Bl Si Wt
Amplifier (Watts)	Signal Connections	Low-Voltage	Magnetic Shielding	Included Accessories	Optional Accessories	Cabinet/Trim Options
300 (600 peak)	RCA Line In/Out, RCA LFE In, Speaker Level In	N	N	1/4"x20 Mini ETC Spikes, Optional Grille Cover Included	–	Bl
200 (200 peak)	RCA Line In/Out, RCA LFE In, Speaker Level In	N	N	1/4"x20 Mini ETC Spikes, Optional Grille Cover Included	–	Bl Si

Trim Legend	
Al	Clear Brushed Aluminum
Ba	Black Brushed Aluminum
Bb	Black/Black Grille
Bl	Black
Bo	Black Oak
Bs	Black Oak/Silver Trim
Bv	Black/Silver Grille
Cu	Custom Trim Available
Na	Native Cherry
Nw	Native Cherry/White Bronze Trim
Sb	Silver/Black Grille
SBg	Silver Grille & Black Grille
Si	Silver
Sv	Silver/Silver Grille
Wt	White

PASB Stereo/Theater Front/Surround/Center In-Wall	TICK Stereo/Theater Front/Surround/Center In-Wall	ABSS Stereo/Theater Subwoofer	DMA MO Stereo/Theater Subwoofer	FD SMD Fresco & Vignette Height with Fresco mounted on stand. Subtract 2.25" (5.7cm) for Vignette.	TAE SMD Fresco & Vignette Height with Fresco mounted on stand. Subtract 2.25" (5.7cm) for Vignette.
24.5" 62.2 cm	15.7" 39.8 cm	15.8" 40.1 cm	13.9" 35.3 cm	48" 121.9 cm	26.2" – 28.9" 66.5 – 73.4 cm
8.9" 22.7 cm	7.5" 18.4 cm	13.5" 34.4 cm	11.7" 29.7 cm	13.8" 35.1 cm	10.3" 26.2 cm
4.9" 12.5 cm	4.7" 11.9 cm	15.2" 38.6 cm	12.6" 32 cm	10.5" 26.7 cm	7.4" 18.8 cm
16 lbs 7.3 kg	5 lbs 2.3 kg	40 lbs 18.1 kg	28.5 lbs 12.9 kg	25 lbs 11.4 kg	7 lbs 3.2 kg



The Loudspeaker Technology Company

© 2006, MartinLogan Ltd.
785.749.0133 Lawrence, KS, USA
www.martinlogan.com info@martinlogan.com