



# Power Amp: PrimaLuna EVO 400

\$4,699(ea) [primaluna-usa.com](http://primaluna-usa.com)



Past PrimaLuna amplifiers have been excellent, but even their last round of monoblocks were still under the magic 100 watt per channel level. Oh, maybe we forgot to tell you that the EVO 400s can be used in stereo or mono operation by merely flipping a switch on the back panel.

With the supplied EL34 tubes (in ultralinear mode) they easily push out 140 watts each. Upgrading to KT150 tubes will get you close to 200 wpc.

The EVO 400 defines the “painless” tube amplifier category. They’ve written the book. But now with this level of refinement and power output, Prima Luna is ready to take on the rest of the tube world.

You’ll only need one quick listen, to see why we like these as much as we do.

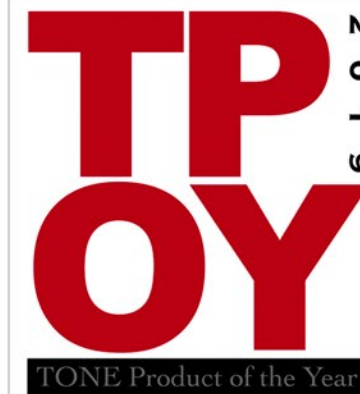






# Preamplifier: PrimaLuna EVO 400

\$4,499 [primaluna-usa.com](http://primaluna-usa.com)



The companion to the EVO 400 amplifier, the EVO 400 pre provides equally stunning performance. Those staying in an all PrimaLuna ecosystem, or having a DAC and phono stage with single ended RCA outputs can opt for the slightly less expensive EVO300 preamplifier, which Kevin Deal tells us is sonically identical, minus the balanced input and output transformers

